

2020
Traffic Stops
And
Racial Profiling
Data

for the
Ferguson Police Department

Supplementary Report

Submitted By

Ferguson Civilian Review Board

July, 2021

Table of Contents

Key Takeaways	3
Traffic Stops/Racial Profiling Data	4
Disparity Index	4
Vehicle Stops Disparity Data, 2020	5
Disparity Charts, 2000 - 2020	6
Number of Vehicle Stops, by Race, 2001 - 2020	7
Resident/Non-Resident Vehicle Stops, 2018 - 2019	8
Appendix. Missouri Vehicle Stops Report	10
Vehicle Stop Data, 2020	10
Vehicle Search Data, 2020	11
Contact Information	12
Who May File a Complaint?	12
How Do You File a Complaint?	12

Key Takeaways

In this supplementary report, 2020 traffic stop data for the Ferguson Police Department is reported. This data comes from the annual report published by the Missouri Attorney General.

The data, and charts illustrating the data, are detailed in the following pages. But there are several key takeaways that the data and charts show:

- There has been a continuing, consistent, and significant disparity in traffic stops between black and white drivers, whether resident or non-resident, over the 20+ years that this disparity has been tracked.
- The disparity in traffic stops between black and white drivers appears to be growing.
- The total number of traffic stops dropped dramatically beginning in 2015 and has remained at a significantly lower level since then. However, this drop in the number of traffic stops did not noticeably change the disparity index.
- The total number of traffic stops, after rebounding slightly in 2018 and 2019, dropped dramatically again in 2020. This drop in the number of traffic stops in 2020 is reflected in the data for law enforcement agencies throughout the state of Missouri. The Missouri Attorney General's report identifies two reasons for this drop, both related to the COVID-19 pandemic:
 - There were less drivers on the road due to stay at home orders
 - Law enforcement agencies tried to minimize contacts with the public

Traffic Stops/Racial Profiling Data

Law enforcement agencies in the state of Missouri, including the Ferguson Police Department (FPD), provide vehicle stop data to the Missouri Attorney General's office each year. This data must be provided to the Attorney General by March 1 and the Attorney General must compile and publish the data by June 1.

Information about the reporting process and all Missouri Vehicle Stops Reports for the years 2000 through 2020 are available at <https://ago.mo.gov/home/vehicle-stops-report>.

This supplementary report updates the section on Racial Profiling Data in our 2020 Annual Report by including the newly published data. The data tables shown in this supplementary report are copied directly from the Attorney General's 2020 report.

Disparity Index

Several summary metrics are included with each year's report. One such metric is the "disparity index". The following table summarizes the disparity index of the FPD for the years 2000 - 2020.

Table 3: Disparity Index from 2000 to 2020 for Ferguson Police Dept

	White	Black	Hispanic	Native American	Asian	Other
2000	.69	1.33	.55	3.84	1.25	.25
2001	.62	1.41	.63	0	.86	.24
2002	.66	1.49	.69	.75	1.08	.19
2003	.5	1.54	.62	.43	.68	.2
2004	.46	1.57	.47	.26	.48	.26
2005	.49	1.45	.69	.17	.54	.16
2006	.48	1.45	.44	0	.47	.31
2007	.42	1.48	.64	.58	.48	.38
2008	.46	1.42	.8	1.15	.31	.52
2009	.4	1.5	.33	.41	.4	.25
2010	.41	1.47	.28	.4	.28	.38
2011	.51	1.3	.38	.13	.42	.16
2012	.49	1.31	.38	.7	.24	.28
2013	.38	1.37	.37	.41	.37	.35
2014	.49	1.3	.22	.18	.58	.48
2015	.31	1.39	.38	.23	.55	.78
2016	.26	1.39	.51	1.1	.54	1.94
2017	.31	1.4	.59	.59	.61	.45
2018	.27	1.42	.3	.13	.7	.44
2019	.24	1.44	.39	.52	.16	.51
2020	.24	1.39	.49	0	0	.39

According to the Attorney General’s report “...the ‘disparity index’... relates each racial/ethnic group’s proportion of total traffic stops to its proportion of the driving-age (16+) population. A value of 1 indicates that a group’s proportion of vehicle stops equals its population proportion: it is neither ‘under-represented’ nor ‘over-represented.’ Values above 1 indicate over-representation, and those below 1 indicate under-representation in traffic stops.”

The FPD shows a continuing, consistent, and significant disparity in traffic stops between black and white drivers, whether resident or non-resident. The disparity in traffic stops also appears to be growing.

Vehicle Stops Disparity Data, 2020

Table 1: Rates by Race for Ferguson Police Dept

	Total	White	Black	Hispanic	Native American	Asian	Other
Population
2019 population	15633	4435	10126	268	60	130	757
2019 population %	100	28.37	64.77	1.71	.38	.83	4.84
Totals
All stops	476	33	430	4	0	0	9
Resident stops	101	8	89	2	0	0	2
Searches	19	2	17	0	0	0	0
Contraband	10	1	9	0	0	0	0
Arrests	9	0	9	0	0	0	0
Citations	283	15	261	2	0	0	5
Rates
Stop rate	3.04	.74	4.25	1.49	0	0	1.19
Stop rate, residents	.65	.18	.88	.75	0	0	.26
Search rate	3.99	6.06	3.95	0	.	.	0
Contraband hit rate	52.63	50	52.94
Arrest rate	1.89	0	2.09	0	.	.	0
Citation rate	59.45	45.45	60.7	50	.	.	55.56

Notes: Population counts are based on the American Community Survey 5-year population estimates (ages 16+) for 2019. The ACS only provides race-specific Hispanic estimates for White, meaning non-White Hispanic residents are double-counted in the race percentages above.

Stop rate = (stops / population) X 100.

Stop rate, residents only = (stops of residents / population) X 100.

Search rate = (searches / stops) X 100.

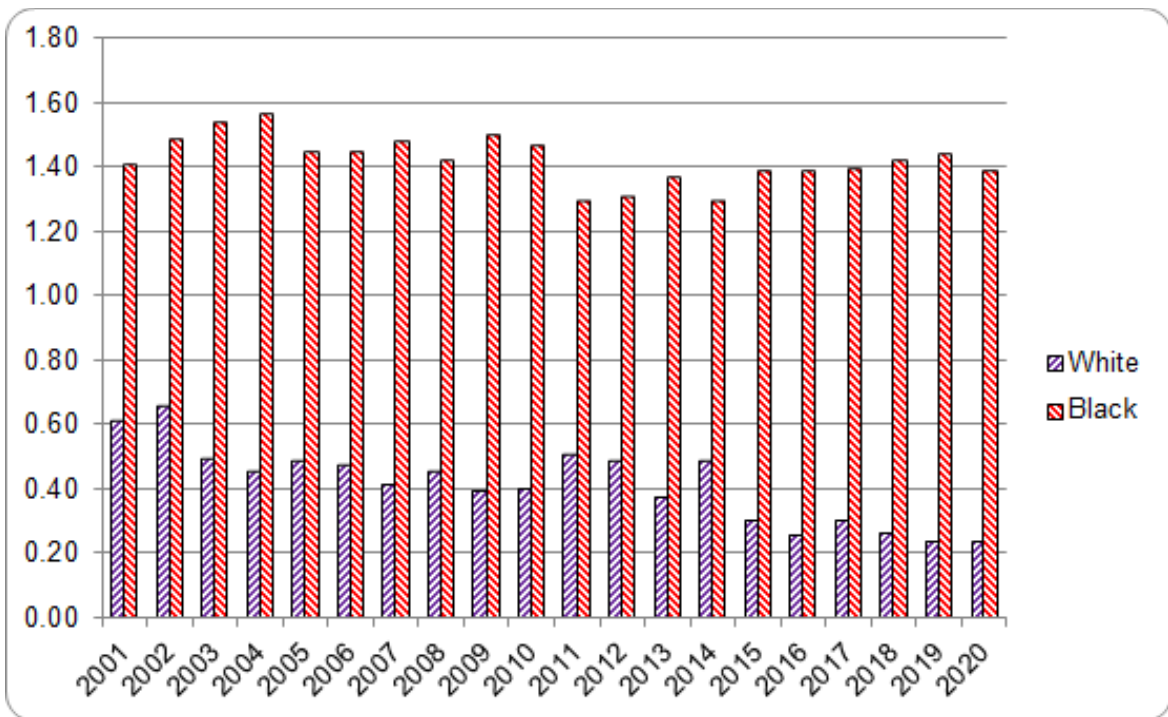
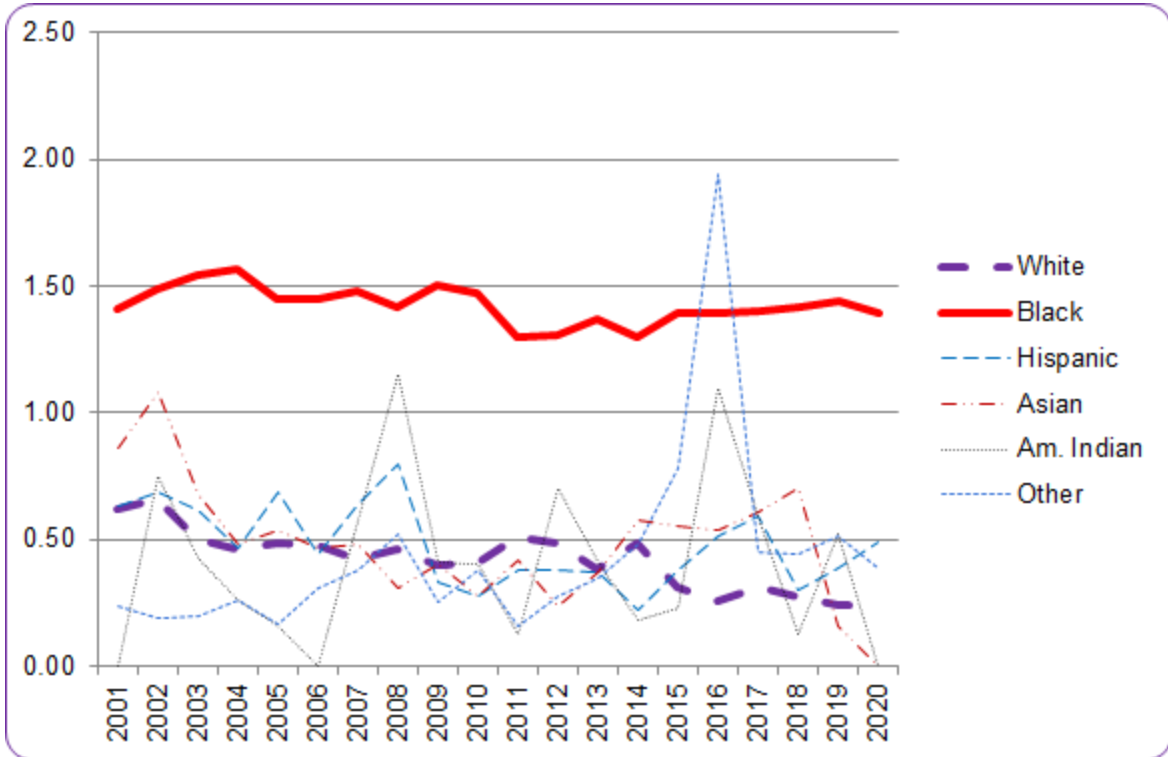
Contraband hit rate = (searches with contraband found / total searches) X 100.

Arrest rate = (arrests / stops) X 100.

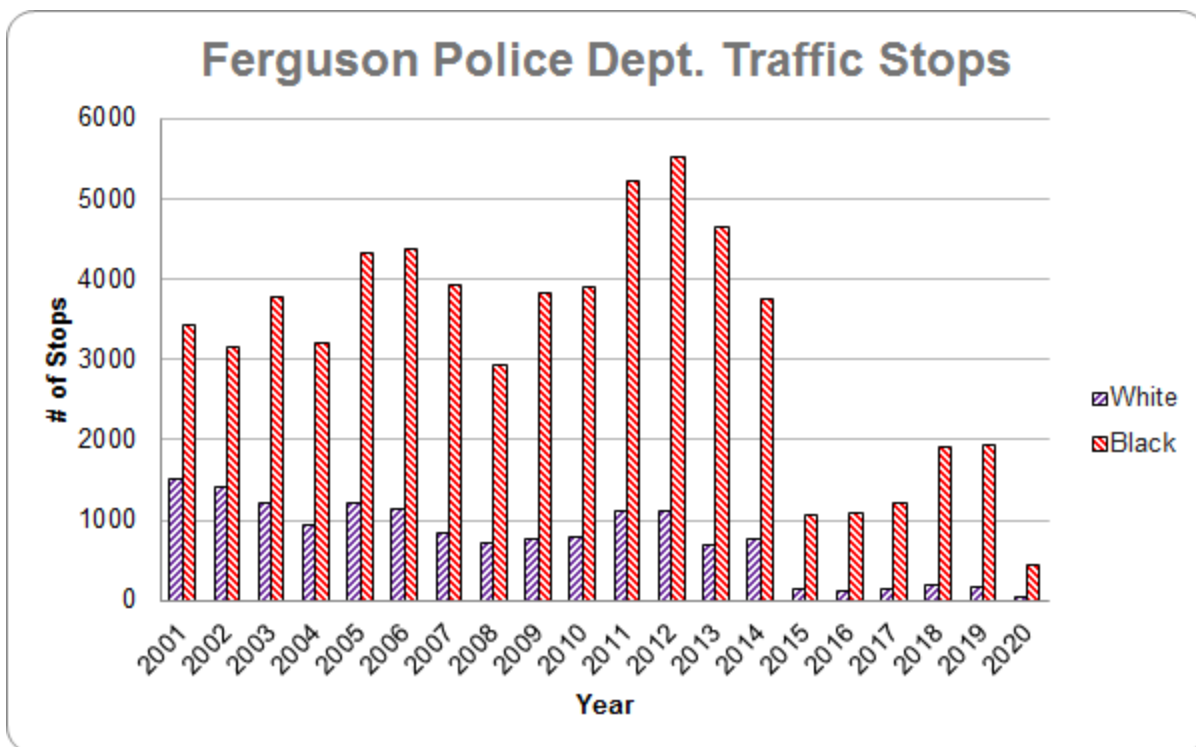
Citation rate = (citations / stops) X 100.

Disparity Charts, 2000 - 2020

The following two charts visually summarize the disparity index for the FPD from the years 2000 through 2020 and make any patterns or trends easy to see.



Number of Vehicle Stops, by Race, 2001 - 2020



While the disparity index is calculated by factoring in the population %, the chart above shows the actual number of stops for white and black drivers.

A large gap in actual stops would be expected even if there were no racial disparity since there are roughly twice as many black resident drivers as white resident drivers. With no disparity, the raw number of stops for black drivers should be about twice as many as for white drivers. With no disparity, in the chart above, each year the bar for black drivers should be about twice as large as the bar for white drivers.

As can be seen, each year the bars for black residents are more than twice as large as for white residents. This is another reflection of the disparity index. The larger the disparity, the larger the difference in the bars.

One fact that the disparity index doesn't reflect, but that jumps out from this chart, is that the number of traffic stops dropped dramatically beginning in 2015, rebounded slightly in 2018 and 2019, and then dropped dramatically again in 2020. However, these drops in the number of traffic stops, whether in 2015 or in 2020, did not noticeably change the FPD disparity index.

Resident/Non-Resident Vehicle Stops, 2018 - 2019

Beginning with 2018 data, law enforcement agencies in Missouri were required to further break traffic stops out into resident and non-resident categories. This change allows the calculation of a “resident only” disparity index by excluding the unknown population makeup of non-resident drivers who were stopped.

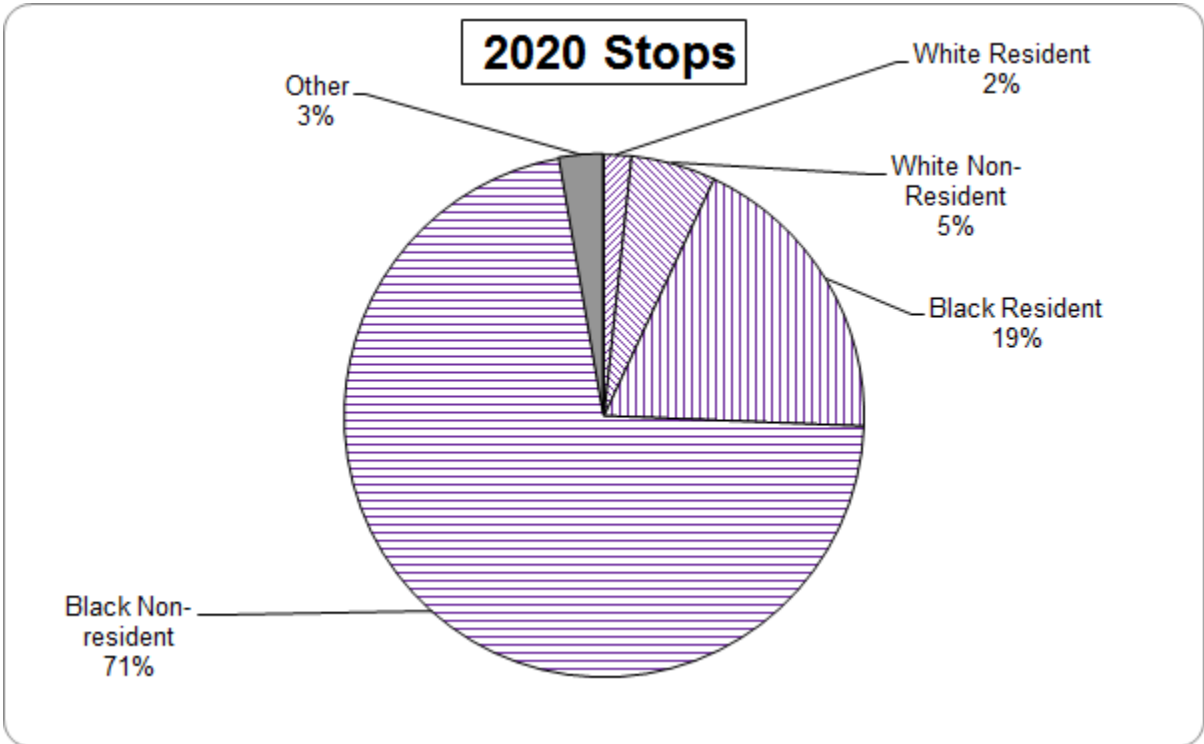
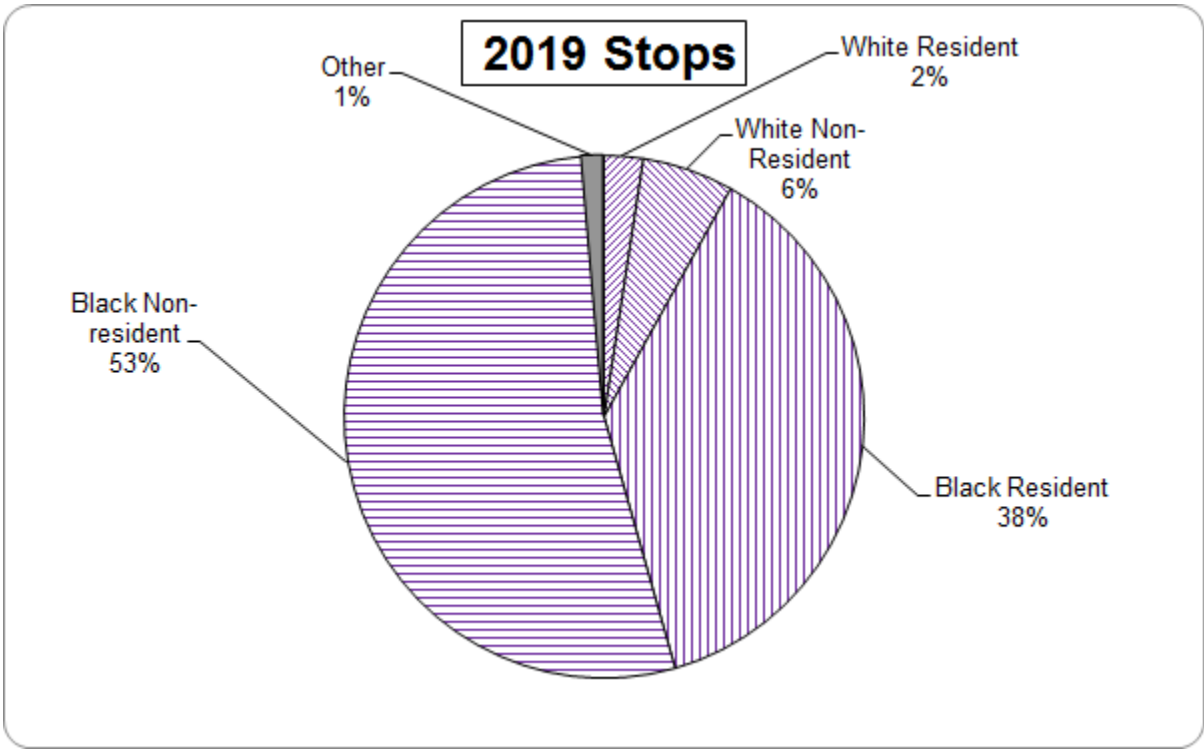
The chart below shows the 2020 resident and non-resident disparity index data for the FPD. On the following page are graphics comparing the proportion of resident and non-resident stops in 2019 and 2020.

Table 2: Disparity Index by Race for Ferguson Police Dept

	Total	White	Black	Hispanic	Native American	Asian	Other
Population							
2019 population	15633	4435	10126	268	60	130	757
2019 population %	100	28.37	64.77	1.71	.38	.83	4.84
Stops							
All stops	476	33	430	4	0	0	9
Resident stops	101	8	89	2	0	0	2
Disparity index							
All stops	.	.244	1.395	.49	0	0	.39
Resident stops	.	.279	1.36	1.155	0	0	.409

Notes: The disparity index is based on the 5-year population estimates from the American Community Survey (ages 16+) for 2019. The ACS only provides race-specific Hispanic estimates for White, meaning non-White Hispanic residents are double-counted in the race percentages above.

Disparity index = (proportion of stops / proportion of population). A value of 1 indicates no difference between the share of stops and share of local population for a given group. Values greater than one indicate over-representation in the share of stops relative to local population, while a value less than 1 indicates under-representation.



Appendix. Missouri Vehicle Stops Report

Vehicle Stop Data, 2020

Table 4: Number of Stops by Race for Ferguson Police Dept

	Total	White	Black	Hispanic	Native American	Asian	Other
All Stops	476	33	430	4	0	0	9
Resident Stops	101	8	89	2	0	0	2
Non-Resident Stops	375	25	341	2	0	0	7
Reason for Stop
Moving	272	23	244	2	0	0	3
Equipment	60	5	55	0	0	0	0
License	133	7	120	1	0	0	5
Investigative	65	4	59	1	0	0	1
Stop Outcome
Searches	19	2	17	0	0	0	0
Contraband	10	1	9	0	0	0	0
Arrests	9	0	9	0	0	0	0
Citation	283	15	261	2	0	0	5
Warning	234	17	212	1	0	0	4
No action	14	2	11	1	0	0	0
Location of Stop
Interstate hwy	0	0	0	0	0	0	0
US hwy	1	0	1	0	0	0	0
State hwy	11	0	10	1	0	0	0
County road	241	17	221	0	0	0	3
City street	190	13	171	3	0	0	3
Other	33	3	27	0	0	0	3
Driver Gender
Male	261	22	231	2	0	0	6
Female	215	11	199	2	0	0	3
Driver Age
17 and under	9	0	9	0	0	0	0
18-29	194	9	181	0	0	0	4
30-39	110	12	96	0	0	0	2
40 and over	163	12	144	4	0	0	3

Vehicle Search Data, 2020

Table 5: Search statistics for Ferguson Police Dept

	Total	White	Black	Hispanic	Native American	Asian	Other
Probable cause	-	-	-	-	-	-	-
Consent	3	1	2	0	0	0	0
Inventory	5	0	5	0	0	0	0
Drug/alcohol odor	5	1	4	0	0	0	0
Incident to arrest	9	0	9	0	0	0	0
Plain view contra.	3	1	2	0	0	0	0
Reas. susp-weapon	3	1	2	0	0	0	0
Drug-dog alert	0	0	0	0	0	0	0
Other	4	0	4	0	0	0	0
What searched	-	-	-	-	-	-	-
Driver	2	1	1	0	0	0	0
Car/property	4	1	3	0	0	0	0
Driver & Property	13	0	13	0	0	0	0
Search duration	-	-	-	-	-	-	-
0-15 minutes	16	2	14	0	0	0	0
16-30 minutes	1	0	1	0	0	0	0
31+ minutes	2	0	2	0	0	0	0
Contraband found	-	-	-	-	-	-	-
Drugs/alcohol	9	1	8	0	0	0	0
Currency	0	0	0	0	0	0	0
Weapon	1	0	1	0	0	0	0
Stolen property	1	0	1	0	0	0	0
Other	0	0	0	0	0	0	0
Arrest charge	-	-	-	-	-	-	-
Outstanding warrant	1	0	1	0	0	0	0
Drug violation	1	0	1	0	0	0	0
Resist arrest	0	0	0	0	0	0	0
Off against person	0	0	0	0	0	0	0
Traffic violation	0	0	0	0	0	0	0
DWI/BAC	6	0	6	0	0	0	0
Property offense	1	0	1	0	0	0	0
Other	1	0	1	0	0	0	0

Contact Information

General Meetings: First Monday of the month, 6:30 pm (if a holiday, then second Monday)
Ferguson City Hall (Council chambers)
110 Church St., Ferguson, MO 63135

Informational Recording: (314) 521-7721 extension 7053

Email: crb@fergusoncity.com

Website: www.fergusoncity.com/544/Citizen-Review-Board

Facebook: Ferguson Civilian Review Board

Who May File a Complaint?

Anyone who believes they have experienced, witnessed, or represents a minor who has experienced misconduct by a member of the Ferguson Police Department (FPD).

How Do You File a Complaint?

Complaints can be filed by completing an official complaint form. Forms may be found on the City of Ferguson website, at Ferguson City Hall (110 Church St.), the Ferguson Police Department (222 S. Florissant Rd.), the Ferguson Public Library (35 N. Florissant Rd.), or at the Ferguson Civilian Review Board meetings.

You may submit this form:

- In person at FPD
- By mail to FPD (222 S. Florissant Rd., Ferguson, MO 63135)
- In a secure drop box at FPD, City Hall, or the Ferguson Public Library
- By email to FPD (fpdcomplaints@fergusoncity.com) or the FCRB (crb@fergusoncity.com)
- By fax to FPD at (314) 524-0429