

2019
Traffic Stops
And
Racial Profiling
Data

for the
Ferguson Police Department

Supplementary Report

Submitted By

Ferguson Civilian Review Board

July, 2020

Table of Contents

Key Takeaways	3
Traffic Stops/Racial Profiling Data	4
Disparity Index	4
Vehicle Stops Disparity Data, 2019	5
Disparity Charts, 2000 - 2019	6
Number of Vehicle Stops, by Race, 2001 - 2019	7
Resident/Non-Resident Vehicle Stops, 2018 - 2019	8
Appendix. Missouri Vehicle Stops Report	10
Vehicle Stop Data, 2019	10
Vehicle Search Data, 2019	11
Contact Information	12
Who May File a Complaint?	12
How Do You File a Complaint?	12

Key Takeaways

In this supplementary report, 2019 traffic stop data for the Ferguson Police Department is reported. This data comes from the annual report published by the Missouri Attorney General.

The data, and charts illustrating the data, are detailed in the following pages. But there are several key takeaways that the data and charts show:

- There has been a continuing, consistent, and significant disparity in traffic stops between black and white residents over the entire 20 years that this disparity has been tracked.
- The disparity in traffic stops between black and white residents appears to be growing.
- The total number of traffic stops dropped dramatically beginning in 2015 and has remained at a significantly lower level for the last 5 years. However, this drop in the number of traffic stops did not noticeably change the disparity index.

Traffic Stops/Racial Profiling Data

Law enforcement agencies in the state of Missouri, including the Ferguson Police Department (FPD), provide vehicle stop data to the Missouri Attorney General's office each year. This data must be provided to the Attorney General by March 1 and the Attorney General must compile and publish the data by June 1.

Information about the reporting process and all Missouri Vehicle Stops Reports for the years 2000 through 2019 are available at <https://ago.mo.gov/home/vehicle-stops-report>.

This supplementary report updates the section on Racial Profiling Data in our 2019 Annual Report by including the newly published data.

Disparity Index

Several summary metrics are included with each year's report. One such metric is the "disparity index". The following table summarizes the disparity index of the FPD for the years 2000 - 2019.

Agency: Ferguson Police Dept.

Year	White	Black	Hispanic	Asian	Am. Indian	Other
2000	0.69	1.33	0.55	1.25	3.84	0.25
2001	0.62	1.41	0.63	0.86	0.00	0.24
2002	0.66	1.49	0.69	1.08	0.75	0.19
2003	0.50	1.54	0.62	0.68	0.43	0.20
2004	0.46	1.57	0.47	0.48	0.26	0.26
2005	0.49	1.45	0.69	0.54	0.17	0.16
2006	0.48	1.45	0.44	0.47	0.00	0.31
2007	0.42	1.48	0.64	0.48	0.58	0.38
2008	0.46	1.42	0.80	0.31	1.15	0.52
2009	0.40	1.50	0.33	0.40	0.41	0.25
2010	0.41	1.47	0.28	0.28	0.40	0.38
2011	0.51	1.30	0.38	0.42	0.13	0.16
2012	0.49	1.31	0.38	0.24	0.70	0.28
2013	0.38	1.37	0.37	0.37	0.41	0.35
2014	0.49	1.30	0.22	0.58	0.18	0.48
2015	0.31	1.39	0.38	0.55	0.23	0.78
2016	0.26	1.39	0.51	0.54	1.10	1.94
2017	0.31	1.40	0.59	0.61	0.59	0.45
2018	0.27	1.42	0.30	0.70	0.13	0.44
2019	0.24	1.44	0.39	0.16	0.52	0.51

According to the Attorney General’s report “...the ‘disparity index’... relates each racial/ethnic group’s proportion of total traffic stops to its proportion of the driving-age (16+) population. A value of 1 indicates that a group’s proportion of vehicle stops equals its population proportion: it is neither ‘under-represented’ nor ‘over-represented.’ Values above 1 indicate over-representation, and those below 1 indicate under-representation in traffic stops.”

The FPD shows a continuing, consistent, and significant disparity in traffic stops between black and white residents. The disparity in traffic stops also appears to be growing.

Vehicle Stops Disparity Data, 2019

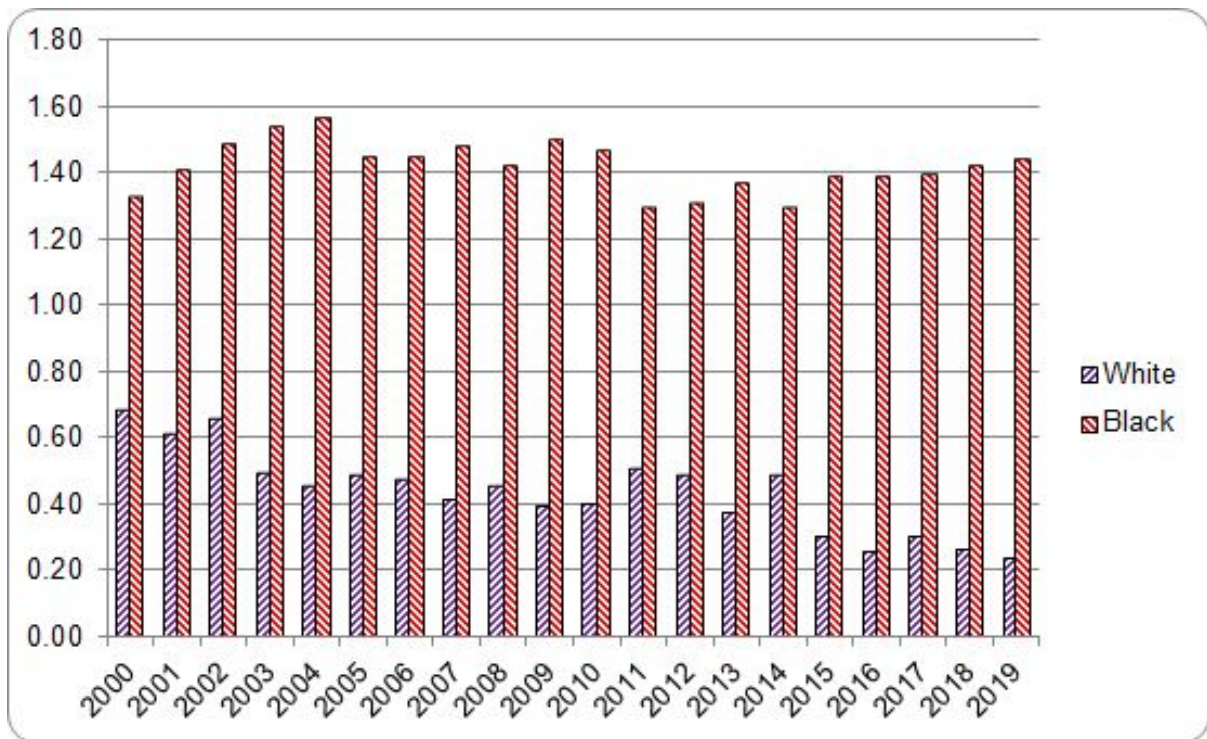
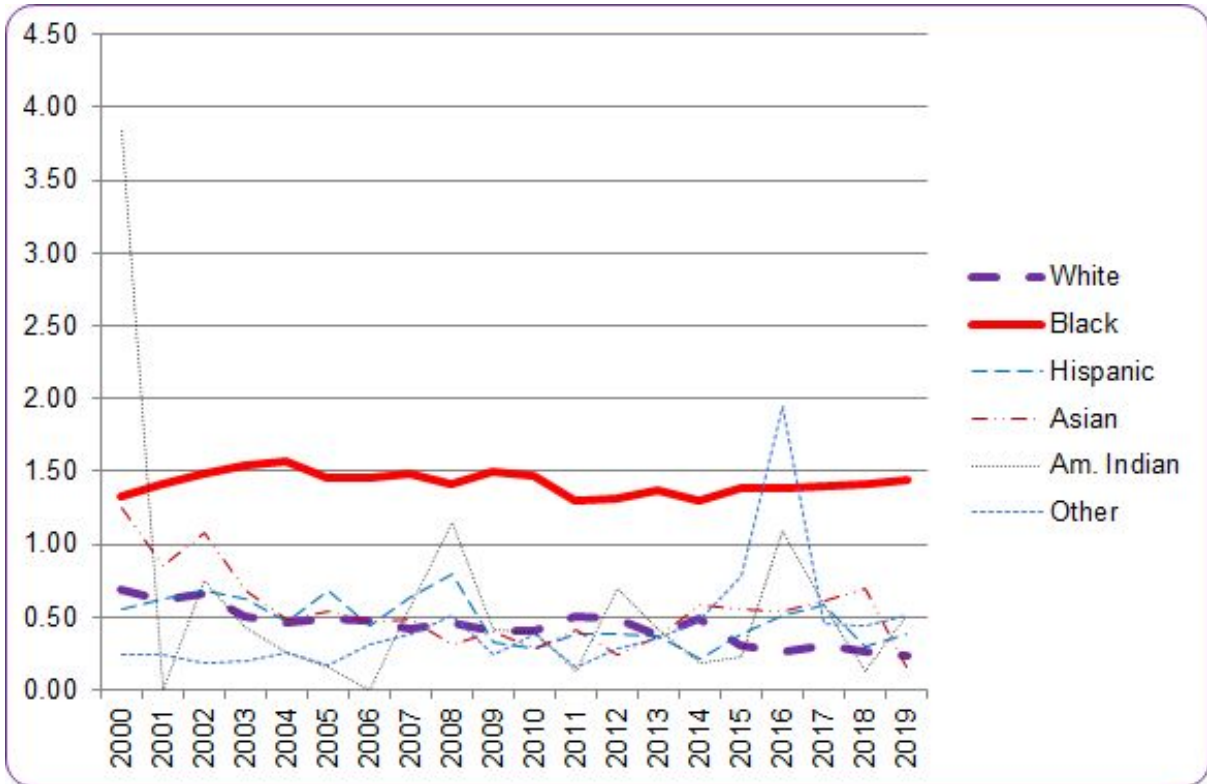
Ferguson Police Dept.		2010 Population: 15,865					
		age 16 and over					
KEY INDICATORS	Total	White	Black	Hispanic	Asian	Am. Indian	Other
Stops	2118	171	1918	9	2	4	14
Searches	112	22	88	1	0	0	1
Arrests	94	16	76	1	0	0	1
Statewide population %	N/A	82.76	10.90	2.94	1.71	0.41	1.28
2010 Local population %	N/A	33.65	63.00	1.10	0.60	0.37	1.29
2010 Pop. Disparity Index	N/A	0.24	1.44	0.39	0.16	0.52	0.51
2018 Local population %	N/A	27.00	66.79	1.40	0.62	0.41	3.78
2018 Pop. Disparity Index	N/A	0.30	1.36	0.30	0.15	0.46	0.18
Search rate	5.29	12.87	4.59	11.11	0.00	0.00	7.14
Contraband hit rate	33.93	40.91	31.82	100.00	#Num!	#Num!	0.00
Arrest rate	4.44	9.36	3.96	11.11	0.00	0.00	7.14
<p>Notes: 2010 Disparity index is based on population figures from the 2010 Census for persons 16 years of age and older who designated a single race. Hispanics may be of any race. Other includes persons of mixed or unknown race. 2018 Disparity index is based on 2014-2018 average population estimates from the U.S. Census Bureau’s American Community Survey (ACS). The ACS only provides race-specific Hispanic estimates for White, meaning non-White Hispanic residents are double-counted in the 2018 race percentages above. While the 2010 disparity index is the default metric, if this jurisdiction has a small non-white Hispanic population, the 2018 disparity index may provide more current information.</p> <p>Disparity index = (proportion of stops / proportion of population). A value of 1 represents no disparity; values greater than 1 indicate over-representation, values less than 1 indicate under-representation.</p> <p>Search rate = (searches / stops) X 100.</p> <p>Contraband hit rate = (searches with contraband found / total searches) X 100.</p> <p>Arrest rate = (arrests / stops) X 100.</p> <p style="text-align: right;">#Error indicates zero denominator.</p>							

The Attorney General’s report this year tries to correct for a possible drift in the disparity index. Drift in the disparity index is caused when the actual population % changes from the baseline population % used in the calculation and causes the numbers to be slightly skewed. This skewing does not change the fact of a significant disparity.

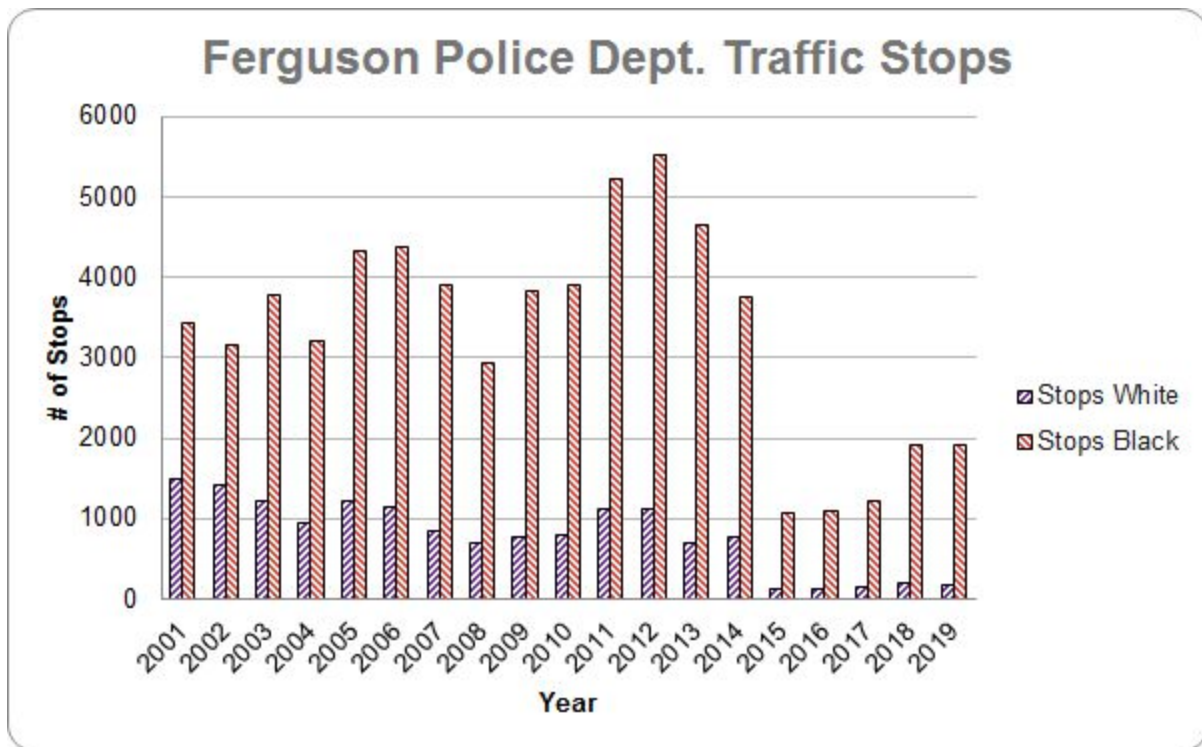
The 2010 census population % for white residents was 33.65% and for black residents was 63.00%, versus 27.00% and 66.79% in the 2018 population estimate. When using the 2018 estimates, the disparity index for white residents increases from 0.24 to 0.30, while for black residents it decreases from 1.44 to 1.36.

Disparity Charts, 2000 - 2019

The following two charts visually summarize the disparity index for the FPD from the years 2000 through 2019 and make any patterns or trends easy to see.



Number of Vehicle Stops, by Race, 2001 - 2019



While the disparity index is calculated by factoring in the population %, the chart above shows the actual number of stops for white and black residents.

A large gap in actual stops would be expected even if there were no racial disparity. Using either the 2010 census population figures or the 2018 population estimates, there are roughly twice as many black resident drivers as white resident drivers. With no disparity, the raw number of stops for black residents should be about twice as many as for white residents. With no disparity, in the chart above, each year the bar for black residents should be about twice as large as the bar for white residents.

As can be seen, each year the bars for black residents are more than twice as large as for white residents. This is another reflection of the disparity index. The larger the disparity, the larger the difference in the bars.

One fact that the disparity index doesn't reflect, but that jumps out from this chart, is that the number of traffic stops dropped dramatically beginning in 2015. However, this drop in the number of traffic stops did not noticeably change the disparity index.

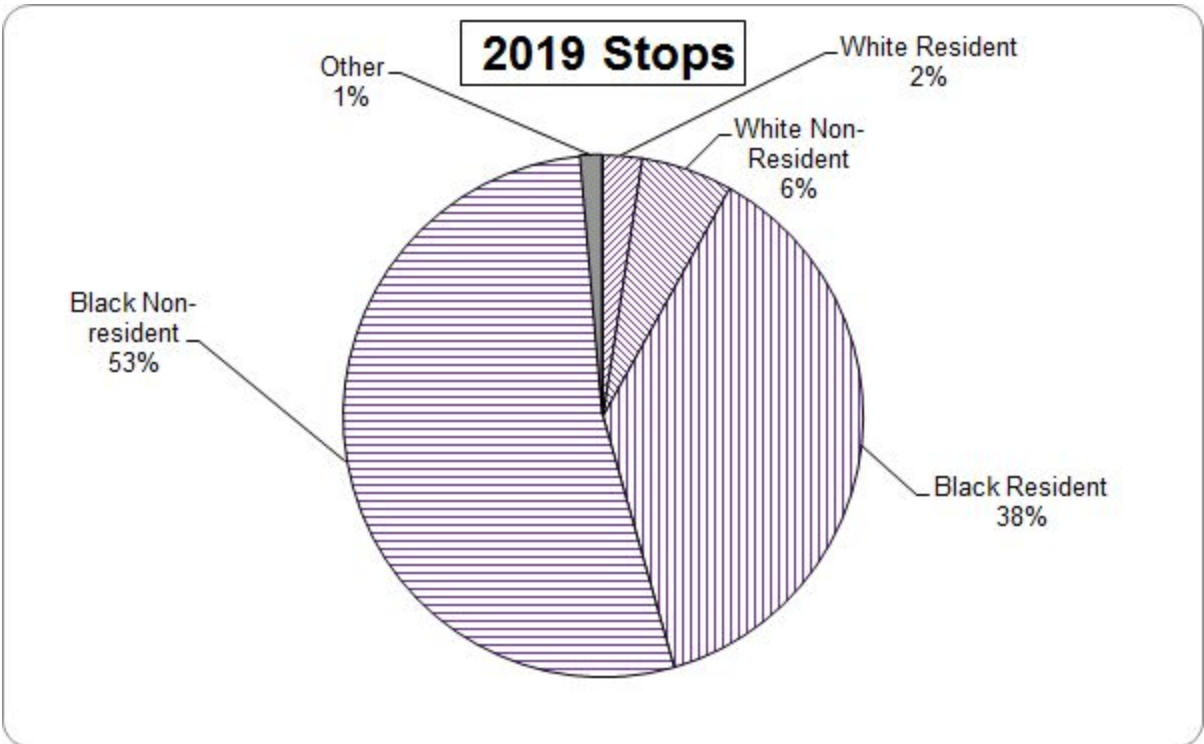
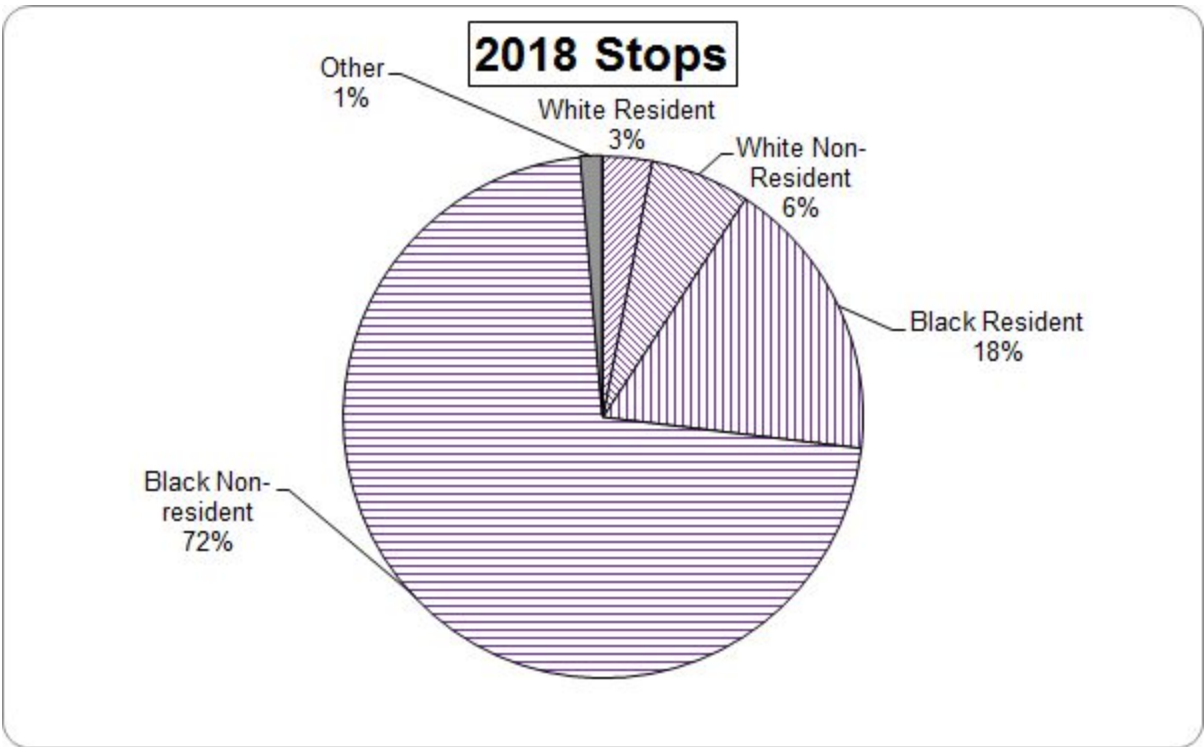
Resident/Non-Resident Vehicle Stops, 2018 - 2019

Beginning with 2018 data, law enforcement agencies in Missouri were required to further break traffic stops out into resident and non-resident categories. This change allows the calculation of a “resident only” disparity index by excluding the unknown population makeup of non-resident drivers who were stopped.

The chart below shows the 2019 resident and non-resident disparity index data for the FPD. On the following page are graphics comparing the proportion of resident and non-resident stops in 2018 and 2019.

Ferguson Police Dept.

KEY INDICATORS	Total	White	Black	Hispanic	Asian	Am. Indian	Other
Stops of all drivers							
Stops	2,118	171	1,918	9	2	4	14
2010 Local Population %	100.00%	33.65	63.00	1.10	0.60	0.37	1.29
Disparity index all stops	---	0.24	1.44	0.39	0.16	0.52	0.51
Stops involving only jurisdiction residents							
Stops	850	51	795	0	1	1	2
Percent of all stops	40.13	29.82	41.45	0.00	50.00	25.00	14.29
2010 Disparity index for jurisdiction residents only	---	0.18	1.48	0.00	0.20	0.32	0.18
Stops involving only non-residents							
Stops	1,268	120	1,123	9	1	3	12
Percent of all stops	59.87	70.18	58.55	100.00	50.00	75.00	85.71
2010 Disparity index for jurisdiction residents only	---	0.28	1.41	0.64	0.13	0.65	0.74
Notes: 2010 Disparity index is based on population figures from the 2010 Census for persons 16 years of age and older who designated a single race. Hispanics may be of any race. Other includes persons of mixed or unknown race. Disparity index = (proportion of stops / proportion of population). A value of 1 represents no disparity; values greater than 1 indicate over-representation, values less than 1 indicate under-representation. #Error indicates zero denominator.							



Appendix. Missouri Vehicle Stops Report

Vehicle Stop Data, 2019

VEHICLE STOP STATS		Total	White	Black	Hispanic	Asian	Am. Indian	Other
Reason for stop	Moving	1132	101	1021	5	1	2	2
	Equipment	265	15	249	0	1	0	0
	License	854	48	794	3	0	2	7
	Investigative	118	24	91	1	0	0	2
Stop outcome	Citation	1444	114	1309	6	2	2	11
	Warning	934	71	855	4	0	0	4
	No action	1	1	0	0	0	0	0
Location of stop	Interstate hwy	6	0	6	0	0	0	0
	US hwy	2	0	2	0	0	0	0
	State hwy	77	10	66	0	1	0	0
	County road	1361	85	1268	5	0	2	1
	City street	550	63	468	4	1	2	12
	Other	122	13	108	0	0	0	1
Driver gender	Male	1059	92	951	6	1	1	8
	Female	1039	59	967	3	1	3	6
Driver age	17 and under	33	5	24	2	0	0	2
	18-29	950	49	887	5	1	2	6
	30-39	510	54	446	4	1	0	5
	40 and over	627	63	561	0	0	2	1

Vehicle Search Data, 2019

SEARCH STATS		Total	White	Black	Hispanic	Asian	Am. Indian	Other
Probable cause/ authority to search	Consent	15	7	8	0	0	0	0
	Inventory	30	4	26	0	0	0	0
	Drug/alcohol odor	32	4	27	1	0	0	0
	Incident to arrest	54	13	40	0	0	0	1
	Plain view contraband	13	3	10	0	0	0	0
	Reasonable suspicion-weapon	3	0	3	0	0	0	0
	Drug-dog alert	3	0	3	0	0	0	0
	Other	7	2	5	0	0	0	0
What searched	Driver	19	3	16	0	0	0	0
	Car/property	35	5	29	1	0	0	0
	Driver & Property	58	14	43	0	0	0	1
Search duration	0-15 minutes	108	21	85	1	0	0	1
	16-30 minutes	3	1	2	0	0	0	0
	31+ minutes	1	0	1	0	0	0	0
Contra-band found	Drugs/alcohol	37	8	28	1	0	0	0
	Currency	1	0	1	0	0	0	0
	Weapon	3	1	2	0	0	0	0
	Stolen property	2	1	1	0	0	0	0
	Other	0	0	0	0	0	0	0
Arrest charge	Outstanding warrant	64	8	54	1	0	0	1
	Drug violation	9	2	7	0	0	0	0
	Resist arrest	3	1	2	0	0	0	0
	Off. against person	3	1	2	0	0	0	0
	Traffic Violation	10	2	8	0	0	0	0
	DWI/BAC	13	7	6	0	0	0	0
	Property offense	5	1	4	0	0	0	0
	Other	7	2	5	0	0	0	0

Contact Information

General Meetings: First Monday of the month, 6:30 pm (if a holiday, then second Monday)
Ferguson City Hall (Council chambers)
110 Church St., Ferguson, MO 63135

Informational Recording: (314) 521-7721 extension 7053

Email: crb@fergusoncity.com

Website: www.fergusoncity.com/544/Citizen-Review-Board

Facebook: Ferguson Civilian Review Board

Who May File a Complaint?

Anyone who believes they have experienced, witnessed, or represents a minor who has experienced misconduct by a member of the Ferguson Police Department (FPD).

How Do You File a Complaint?

Complaints can be filed by completing an official complaint form. Forms may be found on the City of Ferguson website, at Ferguson City Hall (110 Church St.), the Ferguson Police Department (222 S. Florissant Rd.), the Ferguson Public Library (35 N. Florissant Rd.), or at the Ferguson Civilian Review Board meetings.

You may submit this form:

- In person at FPD
- By mail to FPD (222 S. Florissant Rd., Ferguson, MO 63135)
- In a secure drop box at FPD, City Hall, or the Ferguson Public Library
- By email to FPD (fpdcomplaints@fergusoncity.com) or the FCRB (crb@fergusoncity.com)
- By fax to FPD at (314) 524-0429