

CITY OF FERGUSON
2023 STREET IMPROVEMENTS
COMMUNITY DEVELOPMENT BLOCK GRANT
CITY OF FERGUSON, ST. LOUIS COUNTY, MO
IMPROVEMENT PLANS
PROJECT NUMBER: 9703-22-1

GENERAL NOTES

1. ALL UTILITIES, EITHER SHOWN OR NOT SHOWN, IN DIRECT CONFLICT WITH THIS CONSTRUCTION SHALL BE RELOCATED BY OTHERS (RESPECTIVE UTILITY COMPANY). CONTRACTOR SHALL COORDINATE THE WORK WITH EACH UTILITY COMPANY AFFECTED.

2. THE CONTRACTOR SHALL KEEP ALL ADJACENT PAVEMENTS CLEAN AND FREE OF MUD, ROCK, AND DEBRIS AT ALL TIMES DURING CONSTRUCTION.

3. ALL DRIVEWAYS DAMAGED BY THIS CONSTRUCTION IN EXCESS OF THAT INDICATED ON THE PLANS SHALL BE REPLACED AT THE CONTRACTOR'S EXPENSE AS FOLLOWS:

CONCRETE DRIVEWAYS:

1. FULL SLAB AND JOINT REMOVAL AND REPLACEMENT.
2. 4" TYPE 5 AGGREGATE BASE
3. 6" NON-REINFORCED CONCRETE

ASPHALT DRIVEWAYS:

1. SAWCUT MINIMUM 3" DEEP.
2. 4" TYPE 5 AGGREGATE BASE
3. 4" TYPE "BP-1" ASPHALT CONCRETE SURFACE COURSE

4. REMOVE WASTE MATERIALS, INCLUDING EXCAVATED MATERIALS, TRASH, AND DEBRIS AND DISPOSE OF IT OFF OWNER'S PROPERTY.

5. CONTRACTOR SHALL REPLACE ALL MAILBOXES, BUSHES, FENCES, ETC. DAMAGED BY THIS CONSTRUCTION, IN KIND, AT THE CONTRACTOR'S EXPENSE. PROVIDE PROTECTION NECESSARY TO PREVENT DAMAGE TO EXISTING CONDITIONS, TREES, ETC.

6. CONTRACTOR SHALL PROVIDE TRAFFIC CONTROL IN THE FORM OF FLAGMEN, BARRICADES, ETC. AS REQUIRED BY THE MANUAL ON UNIFORM TRAFFIC CONTROL DEVICES.

7. CONTRACTOR TO SOD ALL GRASS AREAS DISTURBED BY THIS CONSTRUCTION. CONTRACTOR SHALL MAINTAIN SOD FOR A 30 DAY PERIOD FROM LAY DOWN, BACKFILL WITH CLEAN MATERIAL, FINISH GRADE AND SOD BEHIND NEW CURBS WITHIN 7 DAYS. PROVIDE SMOOTH TRANSITION WITH EXISTING GRADE. AREAS DISTURBED OUTSIDE OF DESIGNATED GRADING/SOD LIMITS SHALL BE REPAIRED AT THE CONTRACTOR'S EXPENSE, UNLESS APPROVED BY THE ENGINEER.

8. CONTRACTOR SHALL NOTIFY EACH AFFECTED PROPERTY OWNER A MINIMUM OF 48 HOURS PRIOR TO ANY WORK.

9. CONTRACTOR SHALL MAINTAIN TWO-WAY TRAFFIC.

10. ALL ROAD AND SEWER CONSTRUCTION TO BE IN ACCORDANCE WITH ST. LOUIS COUNTY DEPARTMENT OF HIGHWAYS AND TRAFFIC STANDARDS, MSD AND MDDOT STANDARDS.

11. INTERIM STORMWATER DRAINAGE CONTROL (SILTATION CONTROL, SILTATION BASINS, ETC.) MAY BE REQUIRED BY THE ENGINEER. SILTATION CONTROL DEVICES SHALL BE MAINTAINED BY THE CONTRACTOR DURING GRADING OPERATIONS AND UNTIL SUFFICIENT VEGETATION IS ESTABLISHED TO PREVENT EROSION. TEMPORARY SILTATION DEVICES SHALL BE REMOVED UPON COMPLETION OF RE-VEGETATION.

12. CONTRACTOR SHALL REMOVE AND STOCKPILE ALL EXISTING SIGNS IN CONFLICT WITH THE NEW CONSTRUCTION. UPON COMPLETION OF THE PROJECT THEY SHALL BE REINSTALLED AS DIRECTED BY THE ENGINEER.

13. PROVIDE ADEQUATE OFF-STREET PARKING FOR CONSTRUCTION EMPLOYEES. PARKING ON NON-SURFACED AREAS SHALL BE PROHIBITED IN ORDER TO ELIMINATE THE CONDITION WHEREBY MUD FROM CONSTRUCTION AND EMPLOYEE VEHICLES IS TRACKED ONTO THE PAVEMENT CAUSING HAZARDOUS ROADWAY AND DRIVEWAY CONDITIONS.

14. SAWCUTTING SHALL BE INCIDENTAL TO THE UNIT COST FOR THE REMOVED AND REPLACED PAVEMENT OR CURB AND GUTTER.

15. FOR SLAB & CURB REPLACEMENTS, CONTRACTOR SHALL MATCH EXISTING GRADE ELEVATION OF ABUTTING PAVEMENTS & CURBS WITH NEW CONCRETE PRIOR TO MILLING & OVERLAY, & SHALL INCLUDE THIS COST IN THE UNIT PRICE OF SLAB OR CURB REPLACEMENTS.

16. CONTRACTOR IS RESPONSIBLE FOR MATERIAL TESTING (SEE SPECIFICATIONS) & PROVIDING MATERIAL TICKETS, MIX DESIGNS, & CERTIFICATIONS FROM BATCH PLANTS.

17. IF CONTRACTOR WILL NOT POUR NEW CURBING AT DRIVEWAYS ON THE SAME DAY AS "TEAROUT", HE SHALL PROVIDE & PLACE AGGREGATE BACKFILL FOR TEMPORARY USE OF DRIVEWAY AT NO ADDITIONAL COST TO OWNER. CONTRACTOR IS ALSO RESPONSIBLE FOR REMOVING ANY AND ALL "TEMPORARY" AGGREGATE.

18. CONTRACTOR SHALL APPLY HOT RUBBERIZED EDGE SEALANT AT ALL NEW GUTTER LINE EDGES OF ASPHALT (INCIDENTAL TO COST OF ASPHALT).

ADJUSTMENT OF MSD MANHOLE TO GRADE

IF THE MANHOLE IS TO BE RAISED:

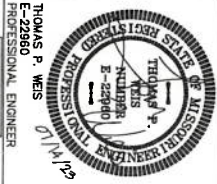
MANHOLES MAY BE RAISED USING COURSES OF BRICK OR APPROVED GRADE RINGS). PROVIDED THE TOTAL ADJUSTMENT OF THE MANHOLE DOES NOT EXCEED 12-INCHES (INCLUDING EXISTING RINGS OR COURSES OF BRICK). FOR MANHOLES WHICH WILL EXCEED THE MAXIMUM OF 12-INCHES, THE TRANSITION SECTION OF THE STRUCTURE SHALL BE REMOVED AND THE BOTTOM SECTION RAISED USING THE SAME MATERIAL AS THE EXISTING STRUCTURE.

IF THE MANHOLE IS TO BE LOWERED:

MANHOLES MAY BE LOWERED BY REMOVING THE TRANSITION SECTION, AND LOWERING THE EXISTING BOTTOM SECTION BY SAWCUTTING THE EXISTING CAST-IN-PLACE CONCRETE, REMOVING THE REQUIRED COURSES OF BRICK, OR REMOVING THE PRECAST RISER SECTION AS APPROPRIATE.

REVISIONS

COMMUNITY DEVELOPMENT BLOCK GRANT
2023 VARIOUS STREET IMPROVEMENTS
CITY OF FERGUSON
MISSOURI, 63136



Weis Design Group
16286 Westwoods Business Park Drive
Ellisville, MO 63021
www.weisdesigngroup.com

PROFESSIONAL ENGINEERING CORP.
LICENSE NO. 000525

Copyright 2023 © P.H. Weis & Associates, Inc. All rights reserved. No part of this document or any part thereof may be reproduced or transmitted in any form or by any means electronic or mechanical, including photocopying, recording, or by any information storage and retrieval system, without the express written consent of P.H. Weis & Associates, Inc. is prohibited.

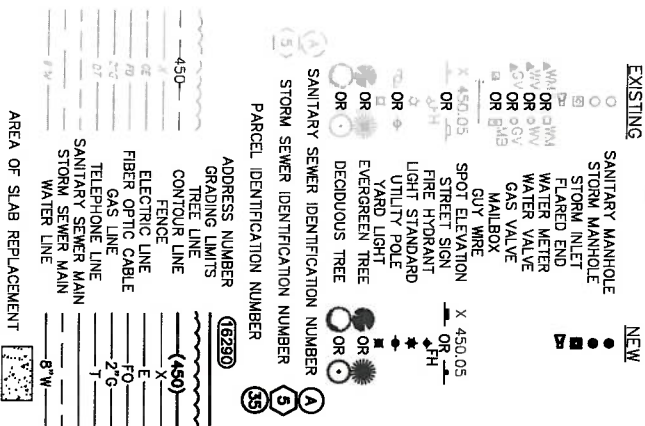
DESIGNED BY: BTW
DRAWN BY: BTW
CHECKED BY: BTW
IN CHARGE: BTW
BASE MAP(S):

COVER SHEET

SHEET INDEX

- | | |
|----|---------------------------------------|
| 1 | COVER SHEET |
| 2 | PLAN SHEET - BLANDING DRIVE |
| 3 | PLAN SHEET - CASTRO DRIVE |
| 4 | PLAN SHEET - DUPRE DRIVE |
| 5 | PLAN SHEET - HALPIN DRIVE |
| 6 | PLAN SHEET - LAURETTE DRIVE |
| 7 | PLAN SHEET - DAY DRIVE |
| 8 | PLAN SHEET - ARGENT DRIVE |
| 9 | PLAN SHEET - ARGENT DRIVE |
| 10 | PLAN SHEET - NORTHWINDS ESTATES DRIVE |
| 11 | PLAN SHEET - NORTHWINDS ESTATES DRIVE |
| 12 | PLAN SHEET - DETAIL SHEET |
| 13 | PLAN SHEET - DETAIL SHEET |
| 14 | PLAN SHEET - DETAIL SHEET |

ISSUE DATE: 07/14/23
SHEET NO. 1



ABBREVIATIONS	
AI	AREA INLET
ASPH	ASPHALT
BO	BOULDER
BS	BOTTOM OF GRADE
BM	BENCHMARK
BO	BY OTHERS
BW	BOTTOM OF WALL
CA	CABLE TELEVISION
CFS	CUBIC FEET PER SECOND
CI	CURB INLET
CL	CENTERLINE
CO	CLEANOUT
CONC	CONCRETE
CMP	CORRUGATED METAL PIPE
CP	CORRUGATED PLASTIC PIPE
DAI	DOUBLE AREA INLET
DO	DOUBLE CURB INLET
DS	DO NOT DISTURB
DT	DRAINAGE
ELEV	ELEVATION
ESMT	EDGE OF PAVEMENT
EX	EXISTING
FE	FINISHED ELEVATION
FL	FIRE HYDRANT
FL	FLOWLINE
FO	FIBER OPTIC
GI	GRATE INLET
HGL	HYDRAULIC GRADE LINE
INV	INVERT
LS	LIGHT STANDARD
N/F	NOT IN CONTRACT
N/C	NOT IN CONTRACT
OE	OVERHEAD ELECTRIC
OT	OVERHEAD TELEPHONE
PT	PEDESTRIAN TRAFFIC
PL	PROPOSED
PR	PROPERTY LINE
PVC	POLYVINYL CHLORIDE PIPE
PWT	PAVEMENT
ROP	REINFORCED CONCRETE PIPE
R/W	RIGHT OF WAY
STA	STATION
T	TO BE ABANDONED
TBA	TO BE REMOVED
TBR	TO BE REMOVED & REPLACED
TBR&R	TEMPORARY CONSTRUCTION EASEMENT
TC	TOP OF CURB
TCE	TOP OF EASEMENT
TSC	TEMPORARY CONSTRUCTION LICENSE
TP	TYPICAL
TR	UNDERGROUND ELECTRIC
UP	USE IN PLACE
UT	UTILITY POLE
W	WATER
WV	WATER VALVE

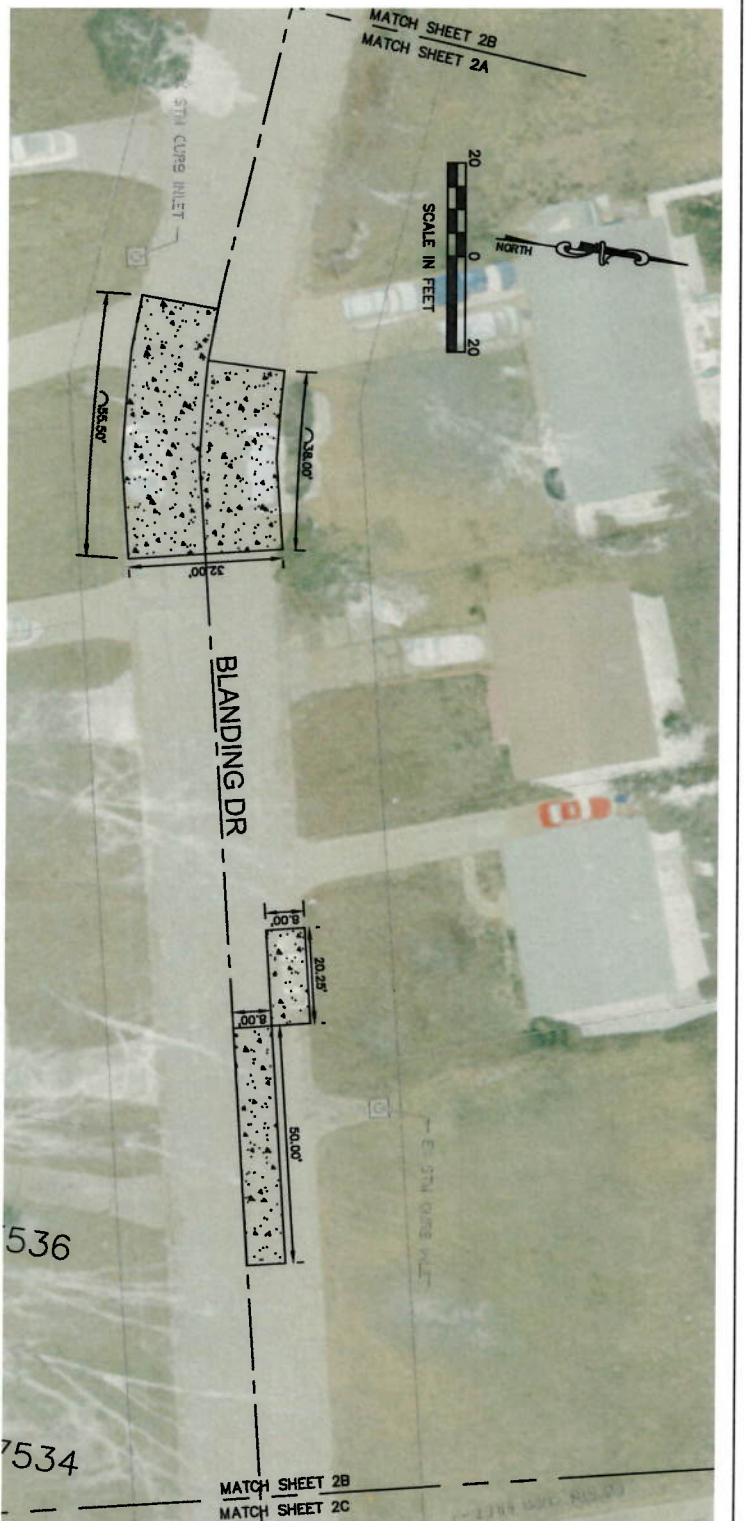
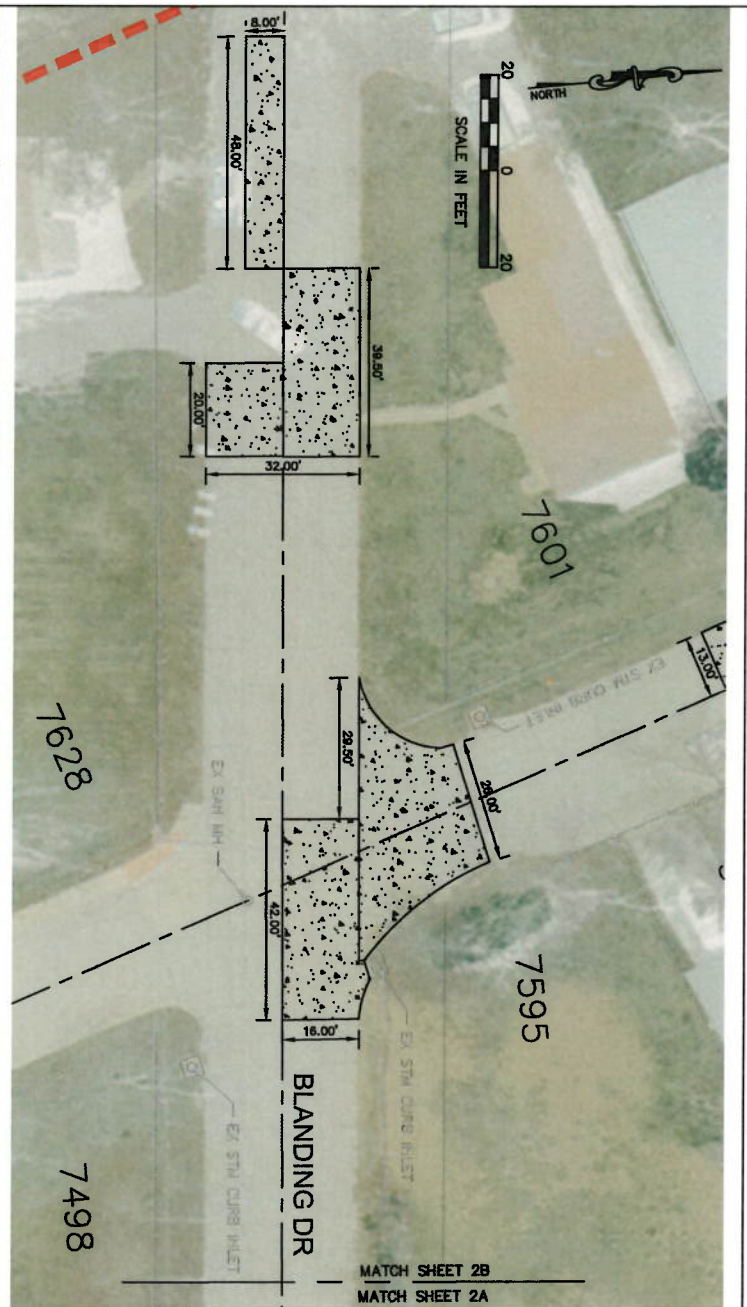
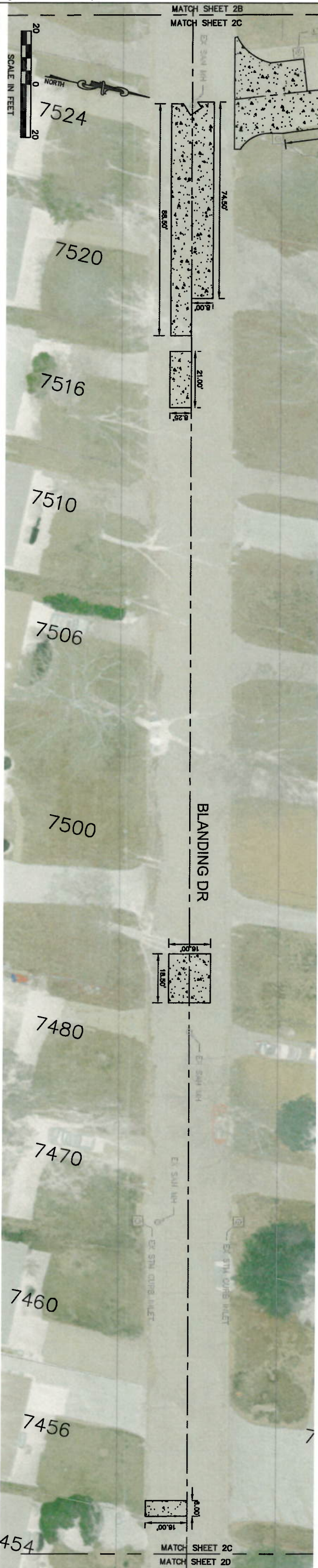


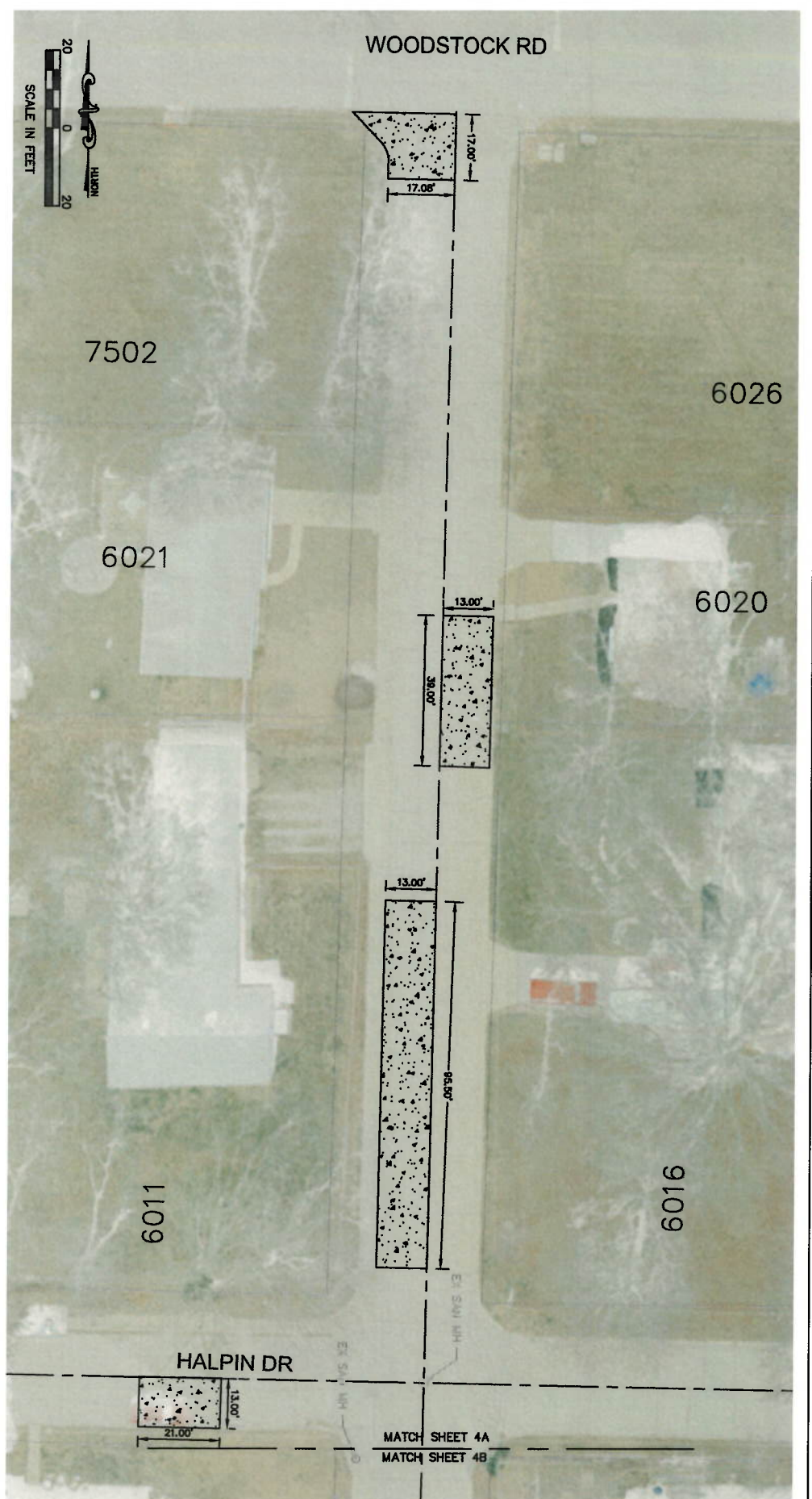
CALL BEFORE
YOU DIG!
1-800-DIG-RITE

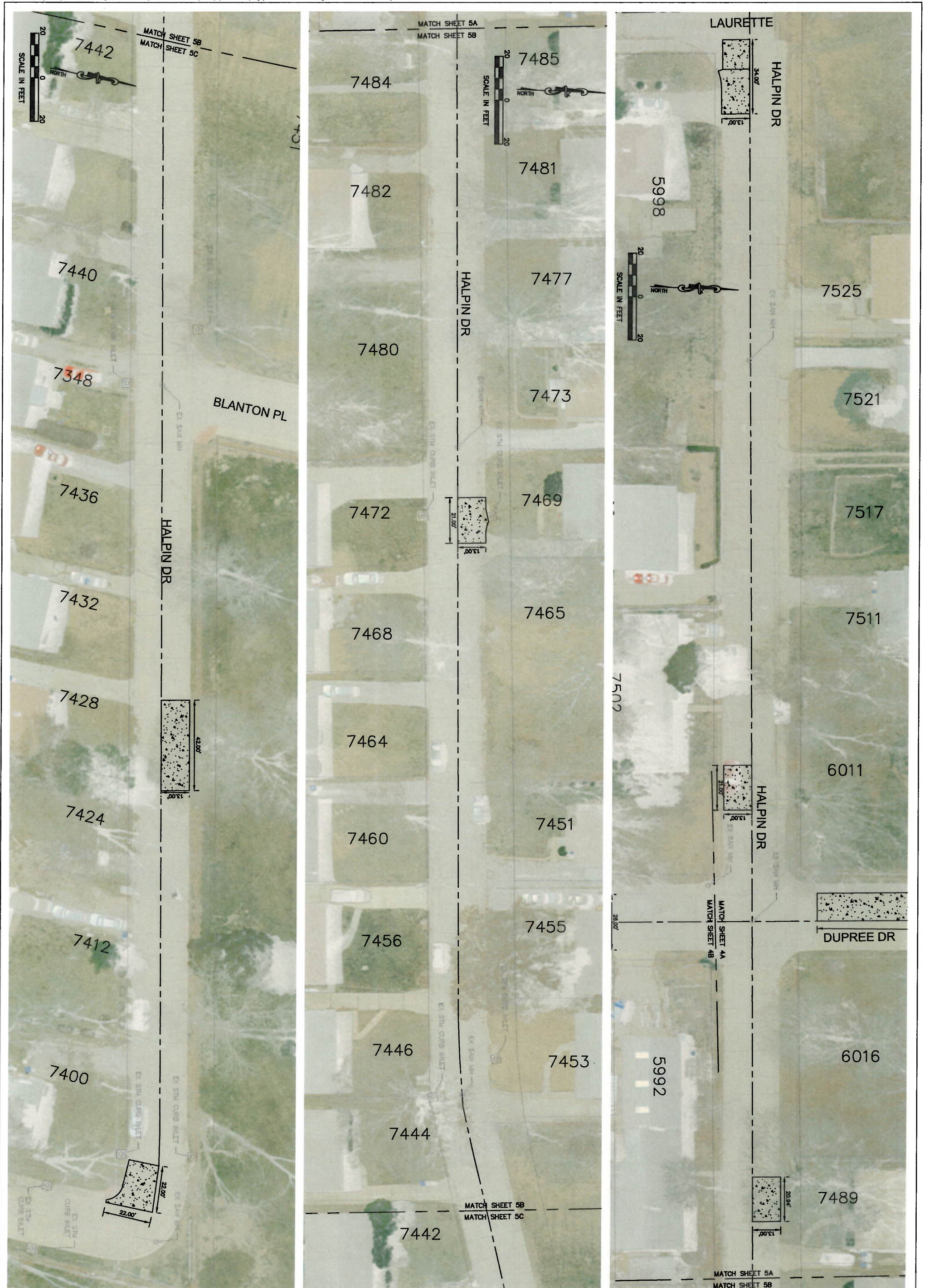
CALL "MISSOURI ONE CALL" TO HAVE LOCATIONS MARKED IN THE FIELD AND "MODOT" FOR UNDERGROUND UTILITIES REQUIRE 48 HOURS NOTICE PRIOR TO CONSTRUCTION. CALL MODOT CUSTOMER SERVICE AT 314-340-4100 TWO WORKING DAYS BEFORE YOU DIG


UTILITIES

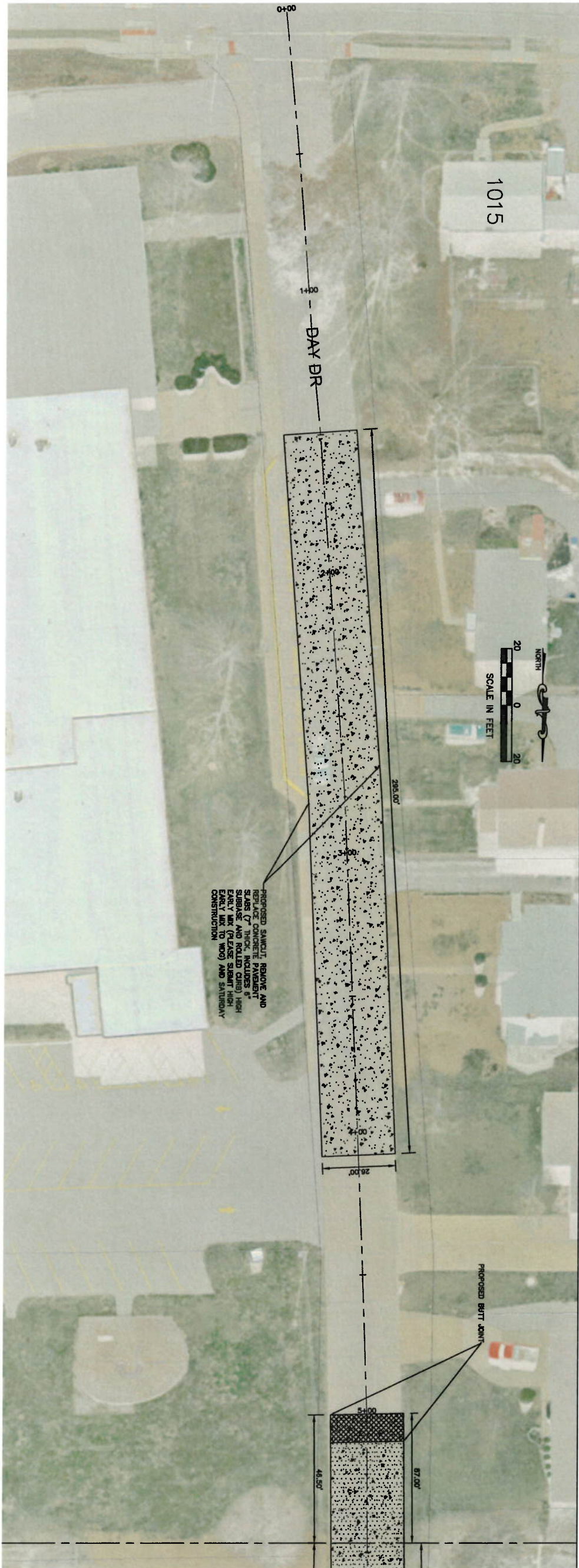
- | | |
|---|--|
| AEREN UE
1800 CHATEAU AVENUE
P.O. BOX 65149
ST. LOUIS, MO 63166
314-654-2129 | A1&T
164 CRESTWOOD PLAZA
ST. LOUIS, MO 63166-6149
314-963-9810 |
| SPIRE GAS COMPANY
700 MARKET STREET
ST. LOUIS, MO 63101
800-887-4173 | METROPOLITAN ST. LOUIS
SEWER DISTRICT
2350 MARKET STREET
ST. LOUIS, MO 63103-2555
314-768-6200 |
| MISSOURI AMERICAN WATER
COMPANY
727 CRAIG ROAD
CREVE COEUR, MO 63141
314-996-2302 | CHARTER COMMUNICATIONS
815 CHARTER COMMONS
TOWN & COUNTRY, MO 63017
314-220-2174 |







Copyright 2023 © P.H. Weis & Associates, Inc. 4/26/17 Weis Design Group. Any reproduction or unauthorized use of this document or any part thereof without the expressed written consent of P.H. Weis & Associates, Inc. is prohibited.	DESIGNED BY:		COMMUNITY DEVELOPMENT BLOCK GRANT 2023 VARIOUS STREET IMPROVEMENTS CITY OF FERGUSON MISSOURI, 63136	REVISIONS	
	DRAWN BY: CHECKED BY: BASE MAP(S):			16286 Westwoods Business Park Drive Ellisville, MO 63021 www.weisdesigngroup.com	THOMAS P. WEIS PROFESSIONAL ENGINEER 07/14/23

[illegible]

**COMMUNITY DEVELOPMENT BLOCK GRANT
2023 VARIOUS STREET IMPROVEMENTS
CITY OF FERGUSON
MISSOURI, 63136**



W D Weis Design Group
16286 Westwoods Business Park Drive
Ellisville, MO 63021
www.weisdesigngroup.com

PROFESSIONAL ENGINEERING CORP.
LICENSE NO. 000525

Copyright 2023 © P.H. Wels & Associates, Inc. d/b/a/ Wels Design Group. Any reproduction or unauthorized use of this document or any part thereof without the expressed written consent of P.H. Wels & Associates, Inc. is prohibited.

**DAY
DRIVE**

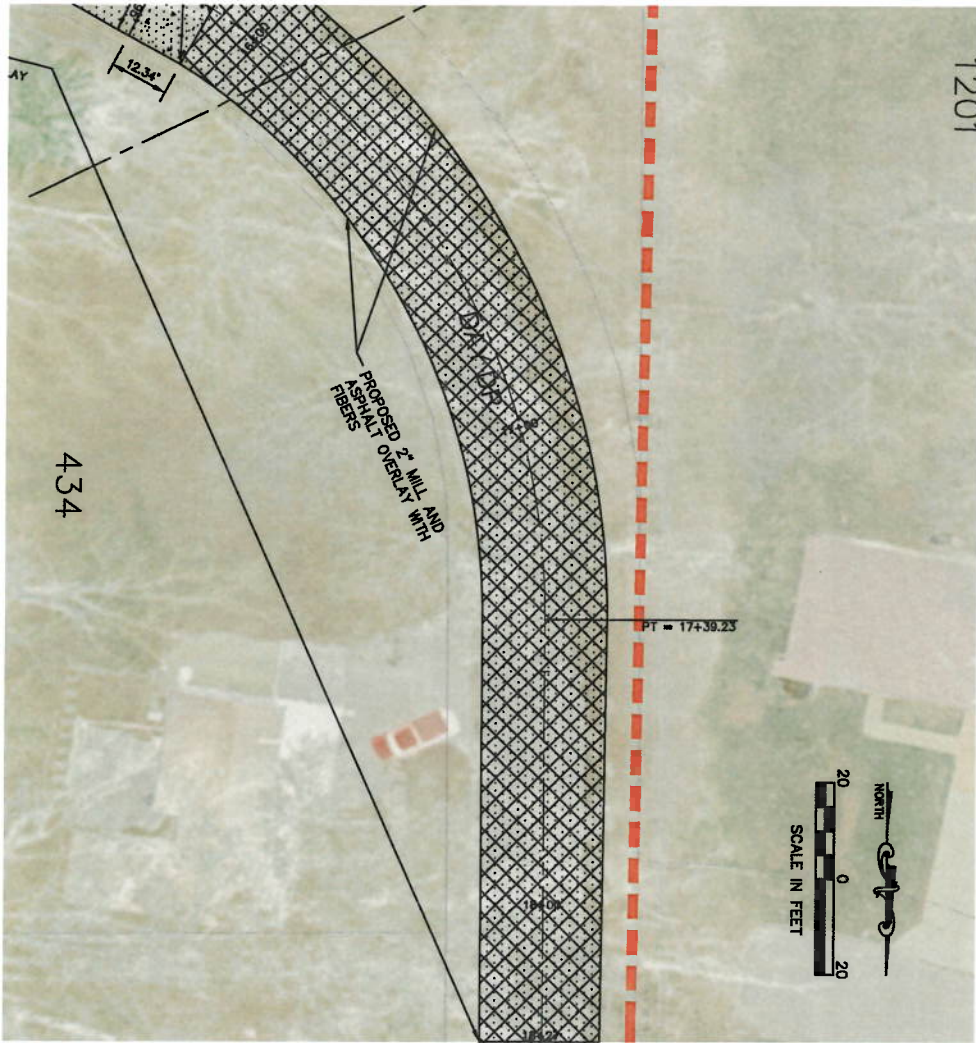
DRAWN BY:	BTW
CHECKED BY:	TPW
BASE MAP(S)	

ISSUE DATE: 07/14/23

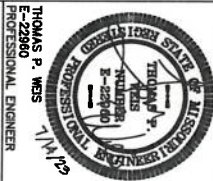
SHEET NO.

•

WDG # 9703-22-1

[illegible]

**COMMUNITY DEVELOPMENT BLOCK GRANT
2023 VARIOUS STREET IMPROVEMENTS
CITY OF FERGUSON
MISSOURI, 63136**



W D Weis Design Group
16286 Westwoods Business Park Drive
Ellisville, MO 63021
www.weisdesigngroup.com

PROFESSIONAL ENGINEERING CORP.
LICENSE NO. 000525

DESIGNED BY:
BTW

Copyright 2023 © P.H. Wels & Associates, Inc. d/b/a/ Wels Design Group. Any reproduction or unauthorized use of this document or any part thereof without the expressed written consent of P.H. Wels & Associates, Inc. is prohibited.

DAY DRIVE

DRAWN BY:
BTW
CHECKED BY:
TPW
BASE MAP(S)

ISSUE DATE: 07/14/23

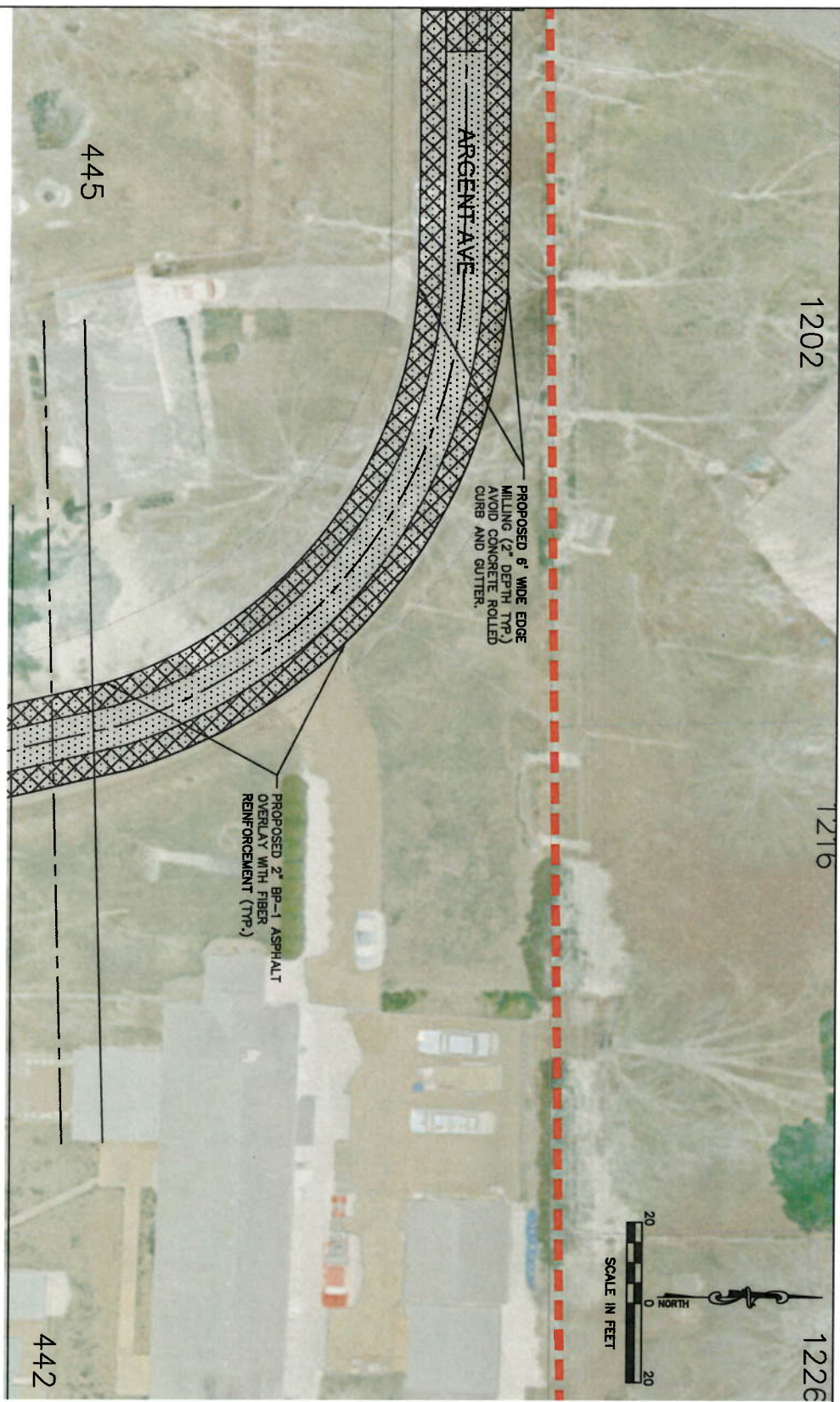
MSD P-

SHEET NO.

88

OF 14

WDG #9703-22-1

[illegible]

**COMMUNITY DEVELOPMENT BLOCK GRANT
2023 VARIOUS STREET IMPROVEMENTS
CITY OF FERGUSON
MISSOURI, 63136**



W D Weis Design Group
16286 Westwoods Business Park Drive
Ellisville, MO 63021
www.weisdesigngroup.com
PROFESSIONAL ENGINEERING CORP.
LICENSE NO. 000525

PROFESSIONAL ENGINEERING CORP.
LICENSE NO. 000525

Copyright 2023 © P.H. Wells & Associates, Inc. d/b/a/ Wells Design Group. Any reproduction or unauthorized use of this document or any part thereof without the expressed written consent of P.H. Wells & Associates, Inc. is prohibited.

DESIGNED BY:
BHW

ARGENT AVENUE

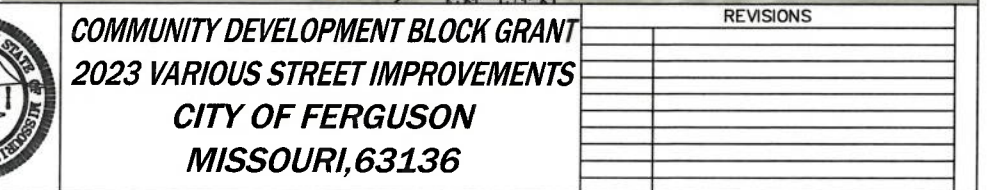
**ARGENT
AVENUE**

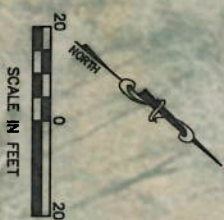
BTW
CHECKED BY: TPW
BASE MAP(S)

ISSUE DATE: 07/14/23

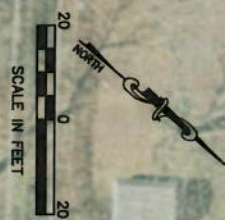
SHEET NO.

OF 14
WDG # 9703-22-1





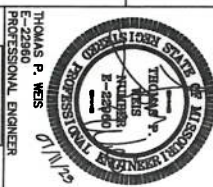
MATCH SHEET 10.1



MATCH SHEET 9.2

[illegible]

**COMMUNITY DEVELOPMENT BLOCK GRANT
2023 VARIOUS STREET IMPROVEMENTS
CITY OF FERGUSON
MISSOURI, 63136**



W D Weis Design Group
16286 Westwoods Business Park Drive
Ellisville, MO 63021
www.weisdesigngroup.com

PROFESSIONAL ENGINEERING CORP.
LICENSE NO. 525

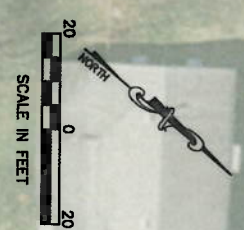
Copyright 2023 © P.H. Wels & Associates, Inc. d/b/a/ Wels Design Group. Any reproduction or unauthorized use of this document or any part thereof without the expressed written consent of P.H. Wels & Associates, Inc. is prohibited.

***NORTHWINDS ESTATES
DRIVE***

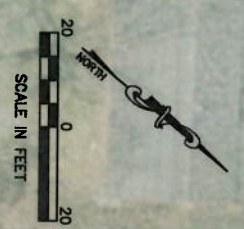
ISSUE DATE: 07/14/23
MSD P-

11

OF 14
WDG # 9703-22-1



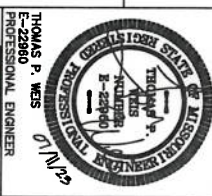
INAGUA DRIVE



MATCH SHEET 10.2

[illegible]

**COMMUNITY DEVELOPMENT BLOCK GRANT
2023 VARIOUS STREET IMPROVEMENTS
CITY OF FERGUSON
MISSOURI, 63136**



WDG Weis Design Group
16286 Westwoods Business Park Drive
Ellisville, MO 63021
www.weisdesigngroup.com

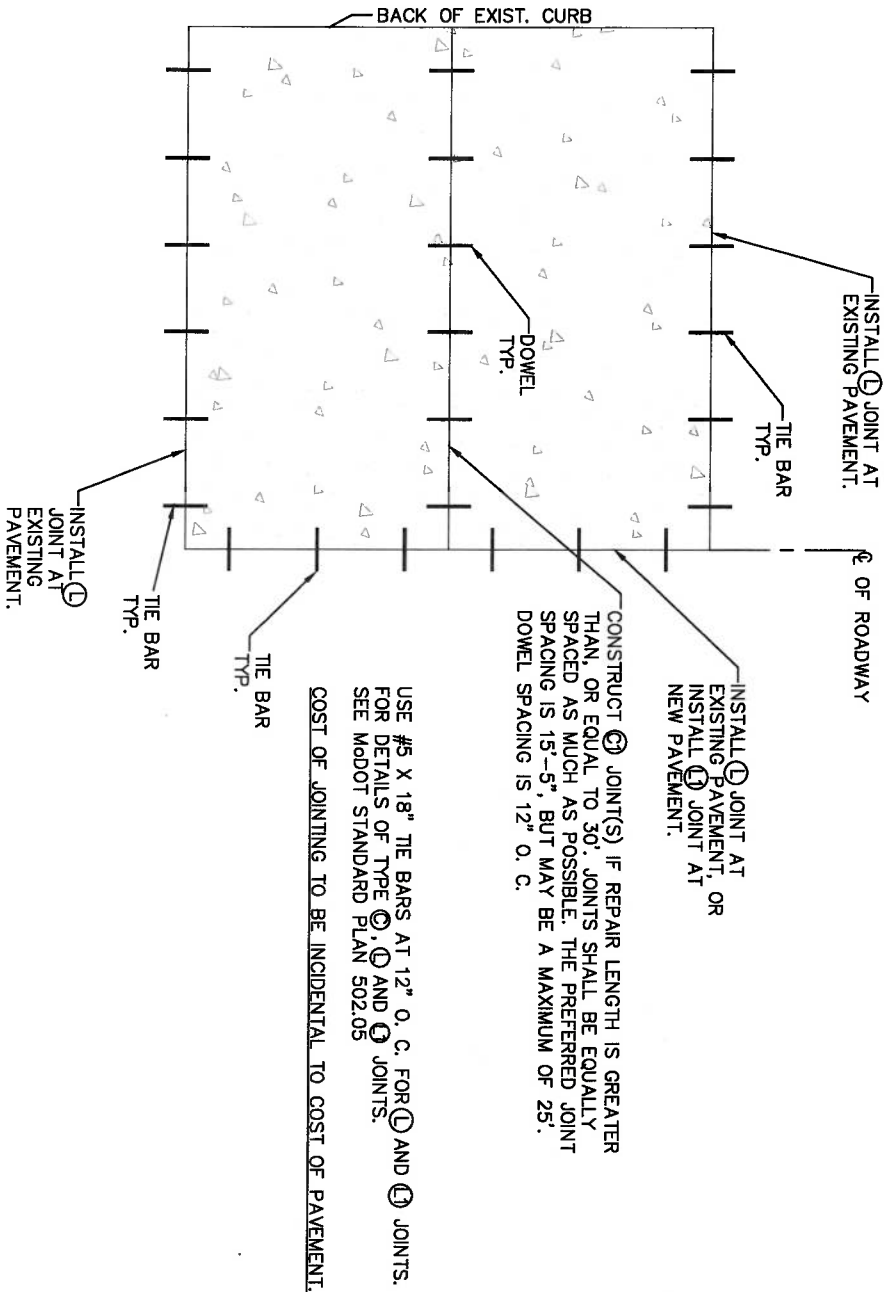
PROFESSIONAL ENGINEERING CORP.
LICENSE NO. 525

DESIGNED BY: Copyright 2023 © P.H. Wells & Associates, Inc. d/b/a/ Wells Design Group. Any reproduction or unauthorized use of this document or any part thereof without the expressed written consent of P.H. Wells & Associates, Inc. is prohibited.

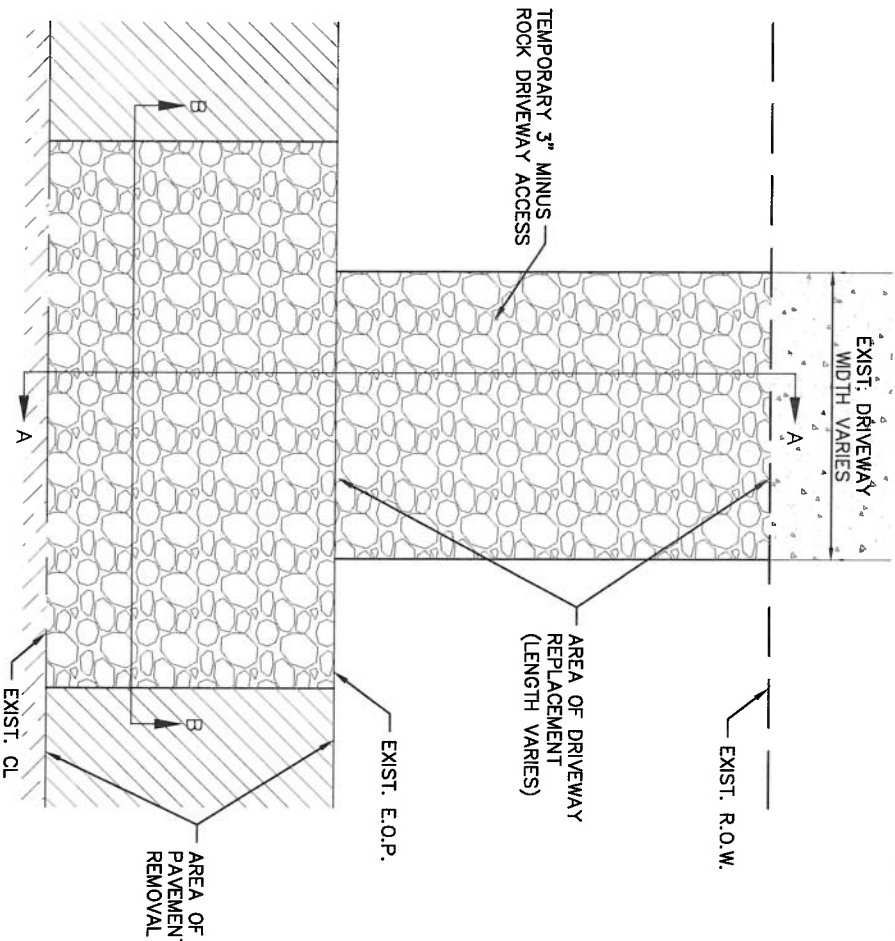
BTW
DRAWN BY:
BTW
CHECKED BY:
TPW
BASE MAP(S)

NORTHWEST

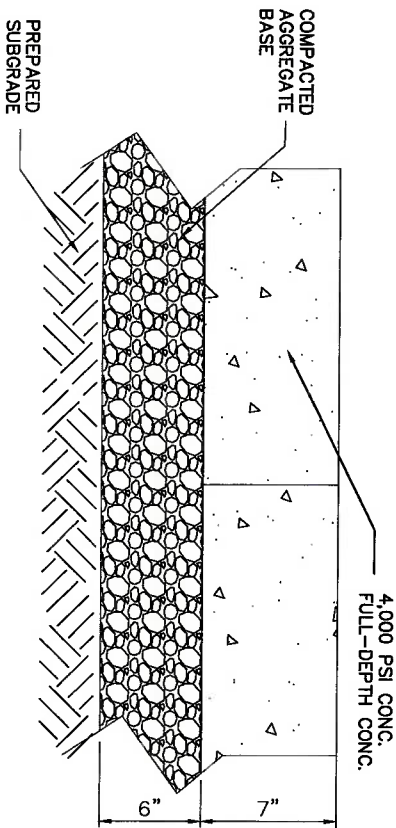
ISSUE DATE: 07/14/23
MSD P--



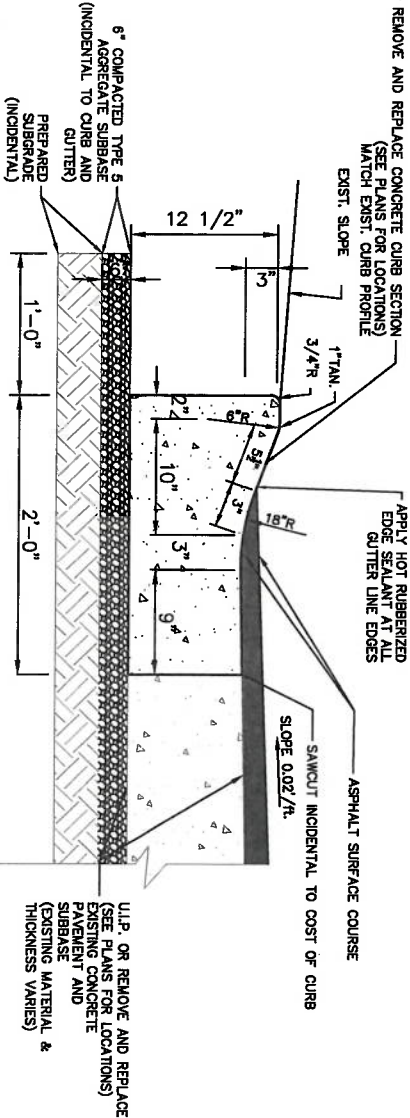
CONCRETE SLAB JOINTING DETAIL
NOT TO SCALE



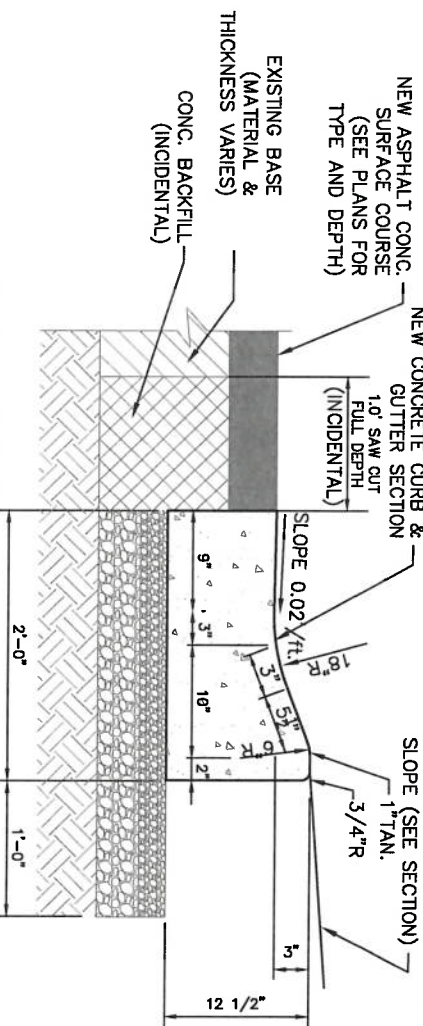
TYPICAL TEMPORARY DRIVEWAY
ACCESS
NOT TO SCALE



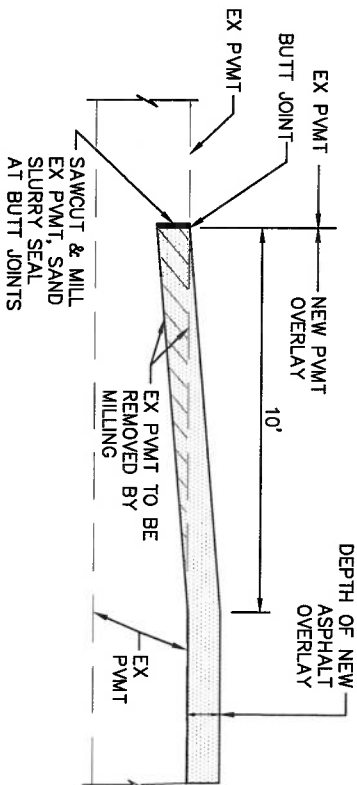
TYPICAL CONCRETE PAVEMENT SECTION
NOT TO SCALE



3" ROLLED CONCRETE CURB AND GUTTER (TYP.) @ DAY DRIVE & NORTHWINDS ESTATES
NOT TO SCALE
NOTE: CONCRETE SUMPS FOR CURB INLETS SHALL BE INCIDENTAL TO THE COST OF CURB AND GUTTER



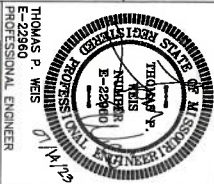
3" ROLLED CONCRETE CURB AND GUTTER @ ARGENT AVENUE
NOT TO SCALE



PAVEMENT BUTT JOINT DETAIL
NOT TO SCALE

REVISIONS	

COMMUNITY DEVELOPMENT BLOCK GRANT
2023 VARIOUS STREET IMPROVEMENTS
CITY OF FERGUSON
MISSOURI, 63136



Weis Design Group
16286 Westwoods Business Park Drive
Ellisville, MO 63021
www.weisdesigngroup.com

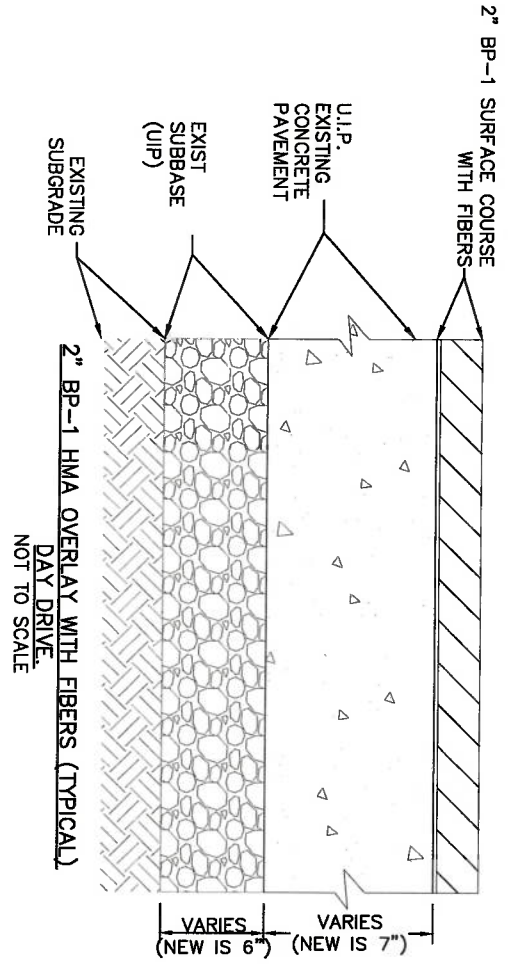
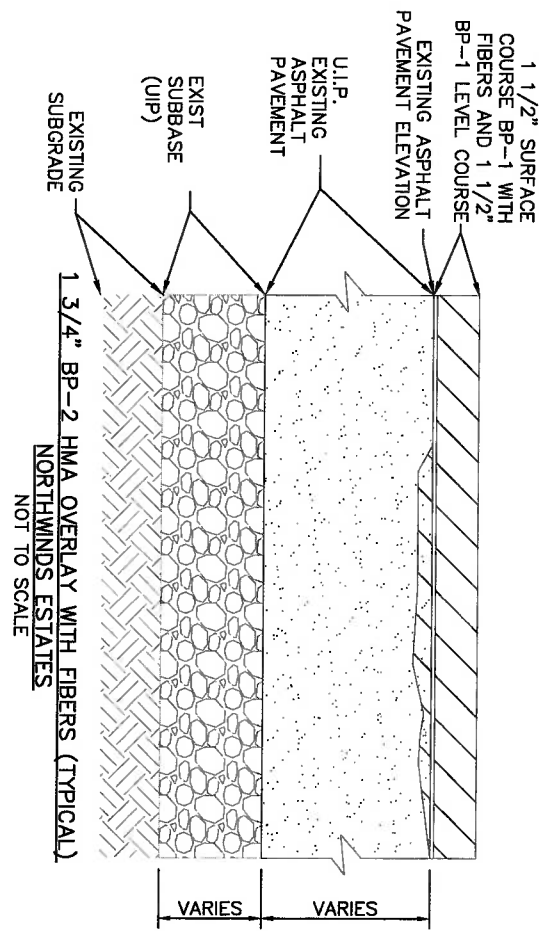
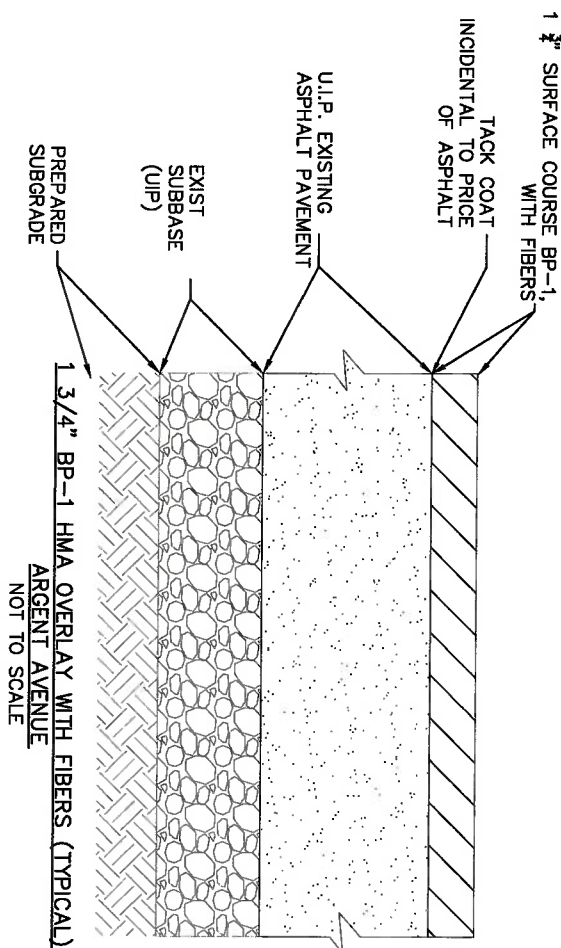
PROFESSIONAL ENGINEERING CORP.
LICENSE NO. 000525

Copyright 2023 © P.H. Weis & Associates, Inc. d/b/a/ Weis Design Group. Any reproduction or unauthorized use of this document or any part thereof without the expressed written consent of P.H. Weis & Associates, Inc. is prohibited.

DETAIL
SHEET

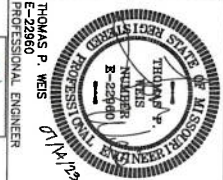
DESIGNED BY: BTW
DRAWN BY: BTW
CHECKED BY: TPW
BASE MAP(S):
ISSUE DATE: 07/14/23
MSD P-

SHEET NO.
13
OF 14
WDC #9703-22-1



REVISIONS

COMMUNITY DEVELOPMENT BLOCK GRANT
2023 VARIOUS STREET IMPROVEMENTS
CITY OF FERGUSON
MISSOURI, 63136



Weis Design Group
16286 Westwoods Business Park Drive
Ellisville, MO 63021
www.weisdesigngroup.com

PROFESSIONAL ENGINEERING CORP.
LICENSE NO. 000525

Copyright 2023 © P.H. Weis & Associates, Inc. d/b/a/ Weis Design Group. Any reproduction or unauthorized use of this document or any part thereof without the expressed written consent of P.H. Weis & Associates, Inc. is prohibited.

DESIGNED BY: BTW
DRAWN BY: BTW
CHECKED BY: TPW
BASE MAP(S):

DETAIL SHEET

ISSUE DATE: 07/14/23
MSD P-
SHEET NO. **14** OF 14
WDG # 9703-22-1